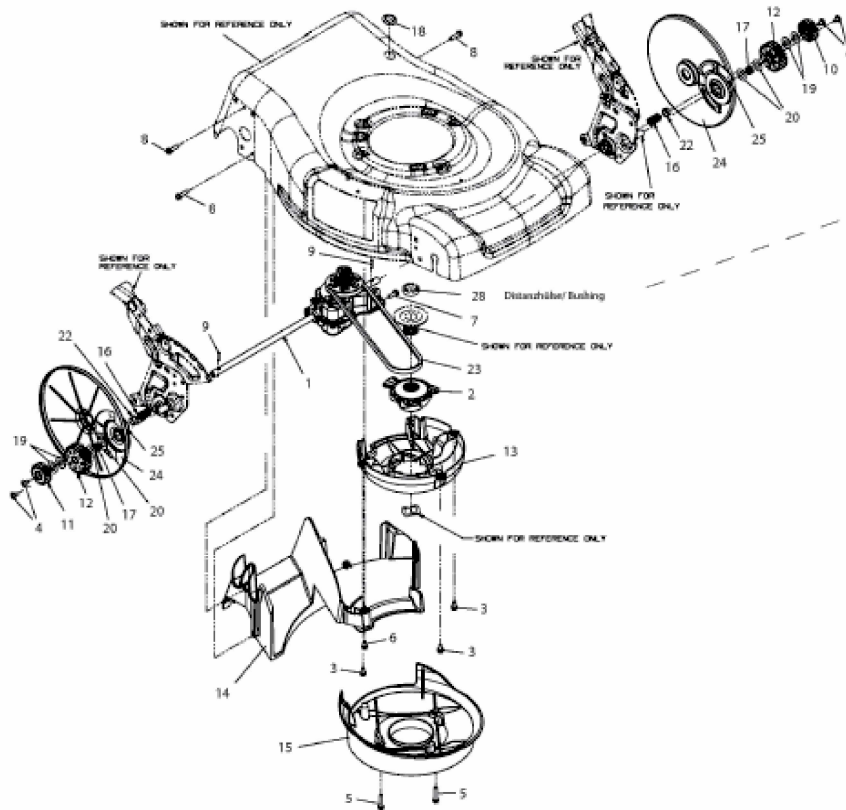


SPK 53 HW > 12A1867D678 (2011) > GETRIEBE, MOTOR



NICHT ABGEBILDET / NOT SHOWN
MOTOR / ENGINE

| REF. | FÜR MÄHER MOD./FOR MOWER MOD. |
|------|---|
| 26 | G 55 (2010) , LR 55 (2010) |
| 27 | SPB 53 HW (2010), GBR 53 HW |
| 28 | Distanzhülse/ Bushing |
| 29 | LUX B53 HMA , G 55 (2011) LR 55 (2011) |
| 30 | LUX B 53 HMAE , SPBE 53 HW |
| 31 | HB 53 RLS-HW BE , YM 7021 SPBE HW |
| 32 | MAC 5553 BHW |
| 33 | MF 21 SHWK , MF 21 SHWB |
| 34 | BHR 53 HW (12A1868T658) 53 SPB-675 HWM |
| 35 | SPB HW 53 |
| 36 | GBR 53 ECO |
| 37 | BLUE POWER 53 A HW , SPB 53 HW (2011) |
| 38 | BLUE POWER 53 A HW ES , SPBE 53 HW (12AJ868M600) |
| 39 | SPBE 53 HW (12AJ868Z621) |
| 40 | SPK 53 HW , MBR 18053 HW |

E3-05341A-01