

This catalog covers:
FJ180V-□S53

GRID NO. This grid covers:
A-01 TITLE

PARTS CATALOG

4-STROKE ENGINE

FJ180V

PRODUCT CODE	NOTE
FJ180V-AS53	STD

PARTS CATALOG INTRODUCTION

This parts catalog lists parts and sub-assemblies provided as service parts.

When it becomes necessary to replace parts, always use KAWASAKI GENUINE PARTS which have passed strict inspection which guarantees quality and performance.

1. HOW TO ORDER PARTS

- When ordering the parts, be sure to use the parts catalog corresponding to the product code. Check the product revision codes on the product and the catalog.
 Product Code (example) : FA130D-AA00
 Product Revision Code
- Specify the part code (all digits) exactly as listed in this catalog on your parts order.
- The parts not shown in the illustrations of this catalog are not sold separately; only the complete units or next higher assemblies illustrated are supplied as the service parts.

2. EXPLANATION OF PARTS CATALOG FORMAT

Ref. No.	Part No.	Description	Quantity	
			A	B
11004	11004-7001	GASKET-HEAD	2	2
11008	11008-7001	HEAD-COMP-CYLINDER#1	1	1
11008A	11008-7002	HEAD-COMP-CYLINDER#2	1	1
11022	11022-7001	CASE-ROCKER	2	2
11060	11060-7001	GASKET,ROCKER CASE	2	2
11060A	11060-7008	GASKET,CRANKCASE COVER	1	1
11060B	11060-7015	GASKET,BREATHER	1	1
13271	13271-7016	PLATE	1	1
13271A	13271-7016	PLATE	1	1
14690	14690-7001	COVER,BREATHER	1	1
49015	49015-6215	COVER,CRANKCASE	1	1
49109	49109-7002	ELEMENT-BREATHER	1	1
49120	49120-6119	CRANKCASE-COMP	1	1
92033	92033-7003	RING-SNAP	2	2
92043	92043-7001	PIN	6	6
92049	92049-7001	SEAL-OIL	4	4
92049A	92049-7002	SEAL-OIL	1	1
92049B	92049-7004	SEAL-OIL	1	1
92049C	92049-7005	SEAL-OIL	1	1
130	130B0612	BOLT-FLANGED	4	4
130A	130B0640	BOLT-FLANGED	4	4
130B	130T0650	BOLT-FLANGED	17	17
130C	130T0875	BOLT-FLANGED	2	2
172	172G0818	BOLT-STUD	4	4

1) Product Code

This code describes the product code covered by this catalog. The product revision code, which is a part of the product code, is omitted.

2) Part Group Title

This title is the representative name for the group of parts illustrated on the page.

3) Reference Number

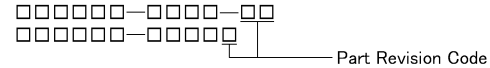
The reference numbers are shown on the illustration and the list as the link between them.

4) Part Number

This is the key of your parts ordering.

Three kinds of part number are used in this catalog.

a. Structure 1

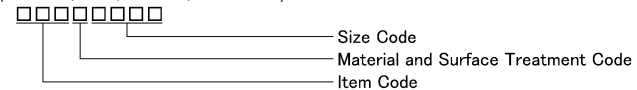


b. Structure 2



c. Standard Hardware Number

(for bolts, nuts, washer, or the like)



5) Description and Additional Information

The part name, the location, the size, and the serial number as additional information, etc. are described here. Use them to find out and check the part required.

When a part number is changed without change of the product revision code and the changed parts are not interchangeable, the serial number of the product is noted as follows;

- (FA130 - 100001) : Affected units are from beginning of the product of the product code up to and including this serial number.
- (FA130 - 100002 -) : Affected units are from this serial number and above.
- (FA130 - 100002 - FA130 - 110001) : Affected units are in this serial number range.

6) Quantity

The figure shows quantity of the part required at the indicated position on the illustration and for the specified product revision code.

The asterisk (*) on this column means the part can be used as the substitute on the product and is supplied until the stock is exhausted.

Note:Some small parts will be supplied by units.

Example: If six (6) bolts are ordered and the minimum quantity per unit is five (5), two (2), units of the bolt will be delivered.

7) Product Revision Code

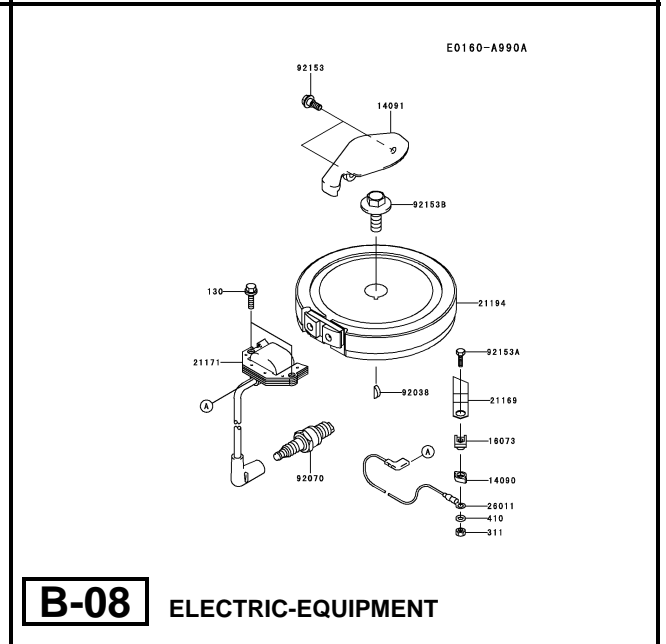
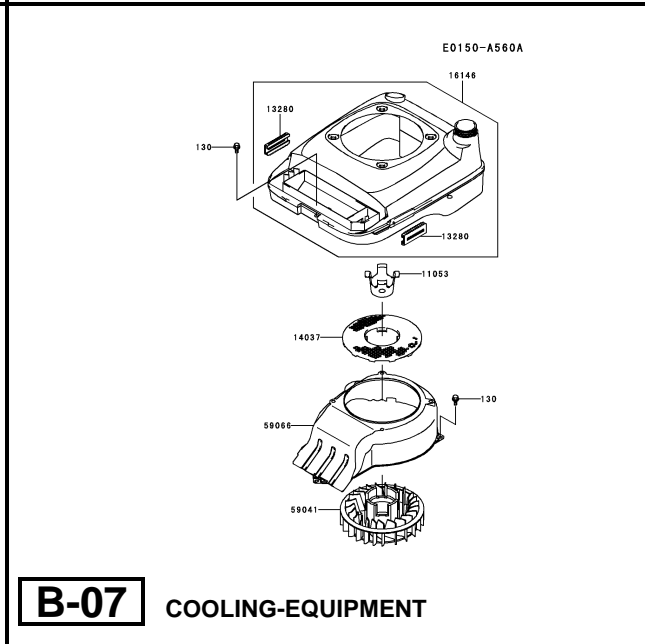
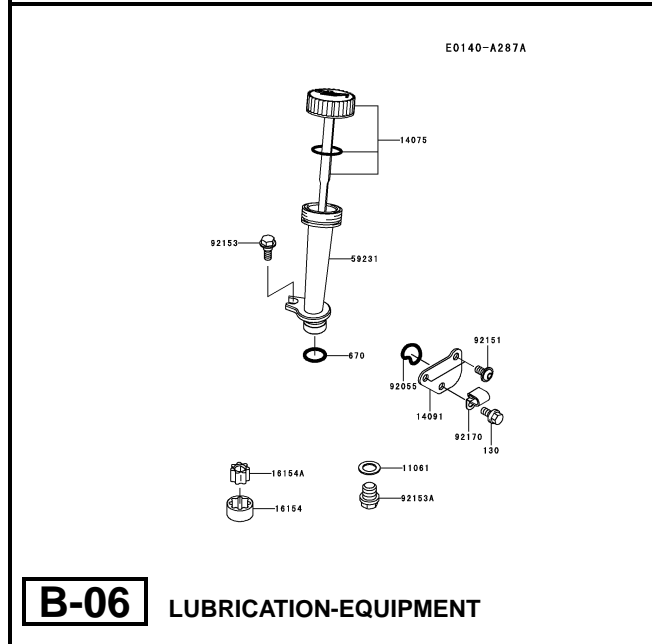
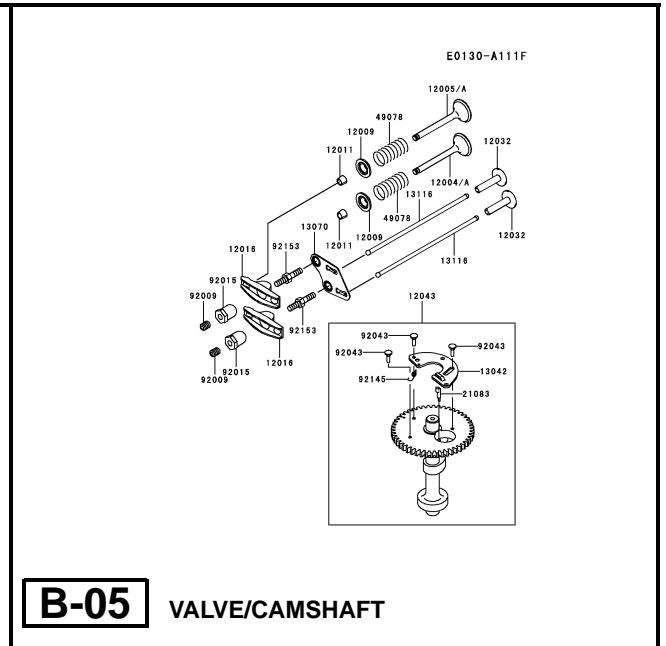
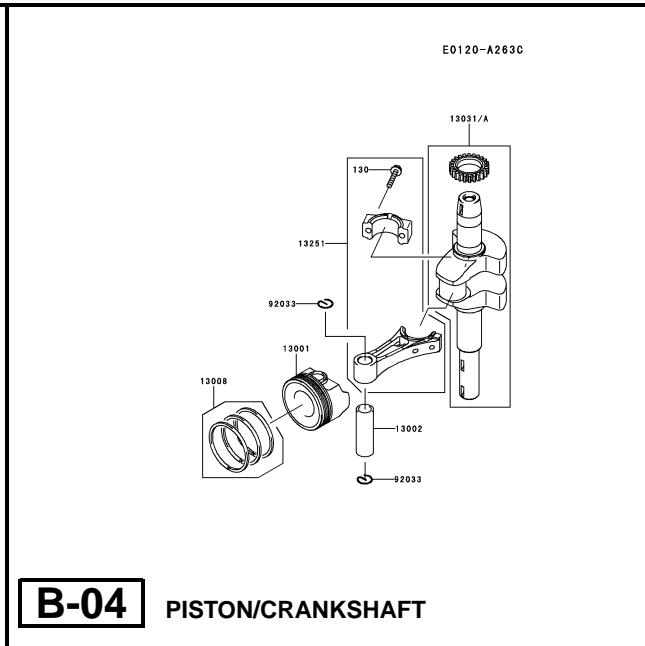
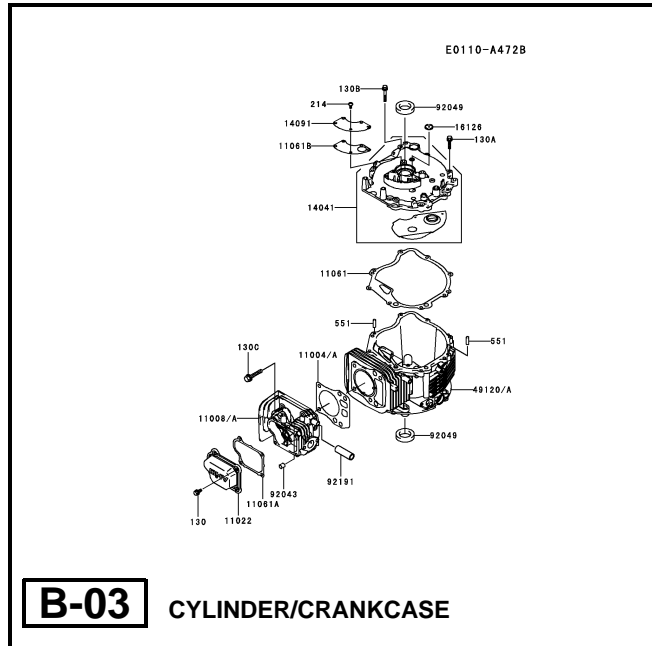
This Code indicates an important change which affects the service parts interchangeability.

3. ABBREVIATIONS

#.....Number	FR.....Front	RH.....Right Hand
&.....And	G.....Gram	RPM.....Revolutions Per Minute
(+).....Plus	HEX.....Hexagonal	RR.....Rear
(-).....Minus	ID=.....Inside Diameter	STD.....Standard
2ND.....Second	IN.....Inch	T.....Teeth
3RD.....Third	L=.....Length	T=.....Thickness
4TH.....Fourth	LH.....Left Hand	U/S.....Under Size
A.....Ampere	LWR.....Lower	UPP.....Upper
AR.....As Required	MM.....Millimeter	V.....Volt
ASSY.....Assembly	O/S.....Over Size	W.....Watt
CNT.....Center	OD=.....Outside Diameter	
COMP.....Complete	REF.....Reference	

This catalog covers:
FJ180V- □ S53

GRID NO. This grid covers:
B-01 PICTORIAL INDEX



This catalog covers:

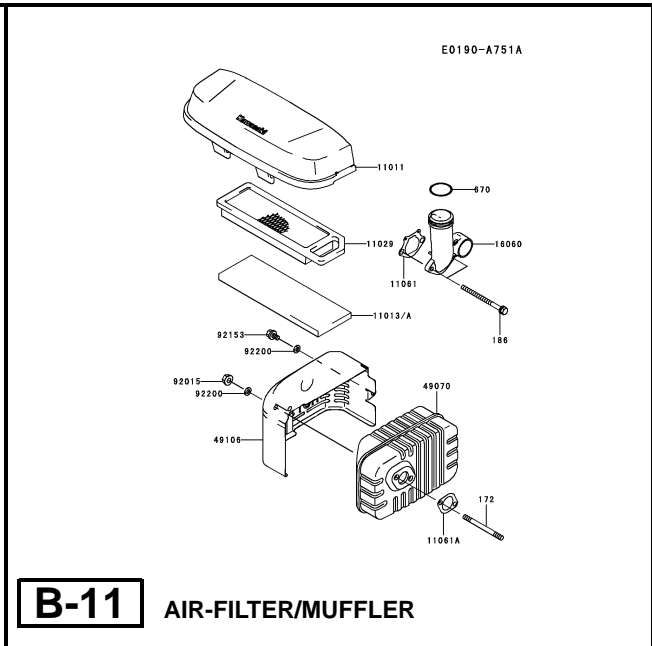
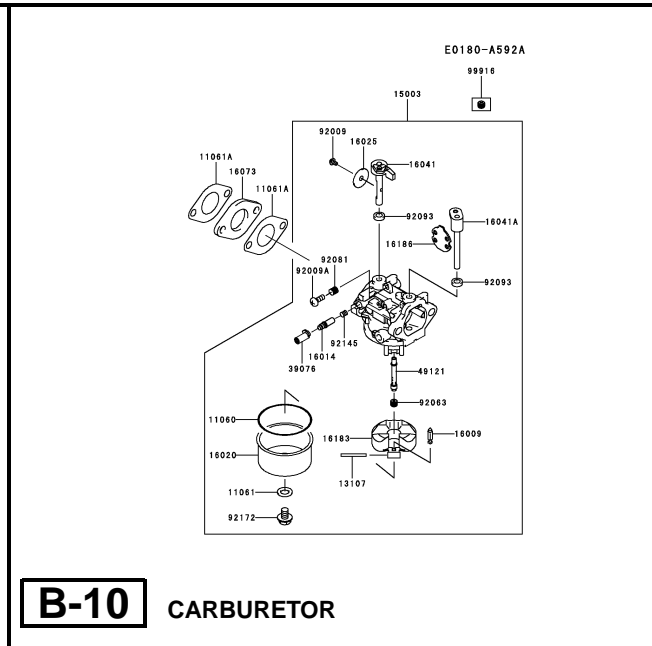
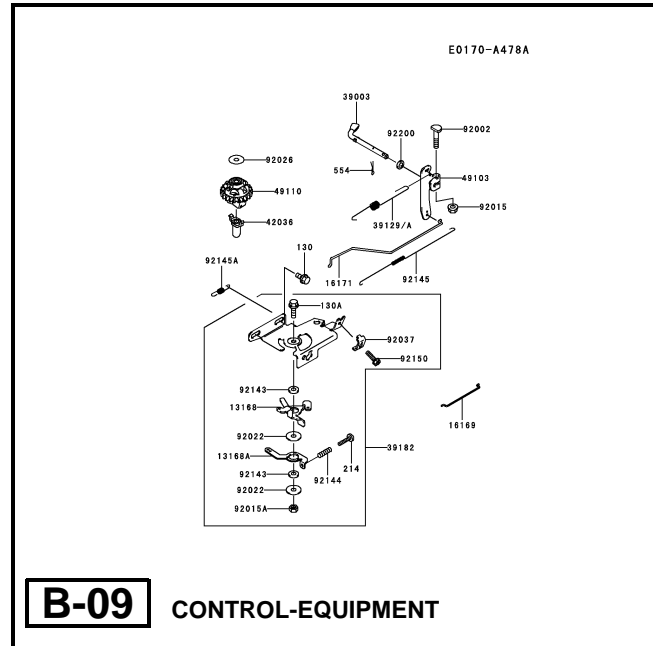
FJ180V- □ S53

GRID NO.

B-02

This grid covers:

PICTORIAL INDEX



This catalog covers:

FJ180V- □ S53

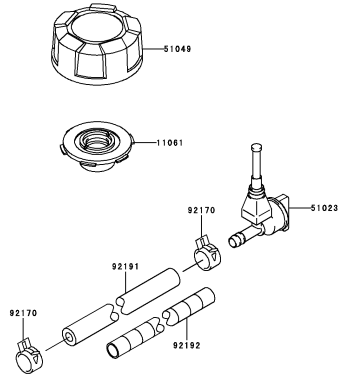
GRID NO.

C-01

This grid covers:

PICTORIAL INDEX

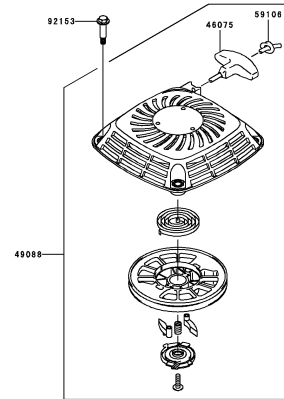
E0200-A445C



C-03

FUEL-TANK/FUEL-VALVE

E0210-A279C



C-04

STARTER

This catalog covers:

FJ180V- □ S53

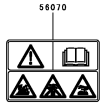
GRID NO.

D-01

This grid covers:

PICTORIAL INDEX

F0290-B072A



D-03

LABEL

This catalog covers:

FJ180V- □ S53

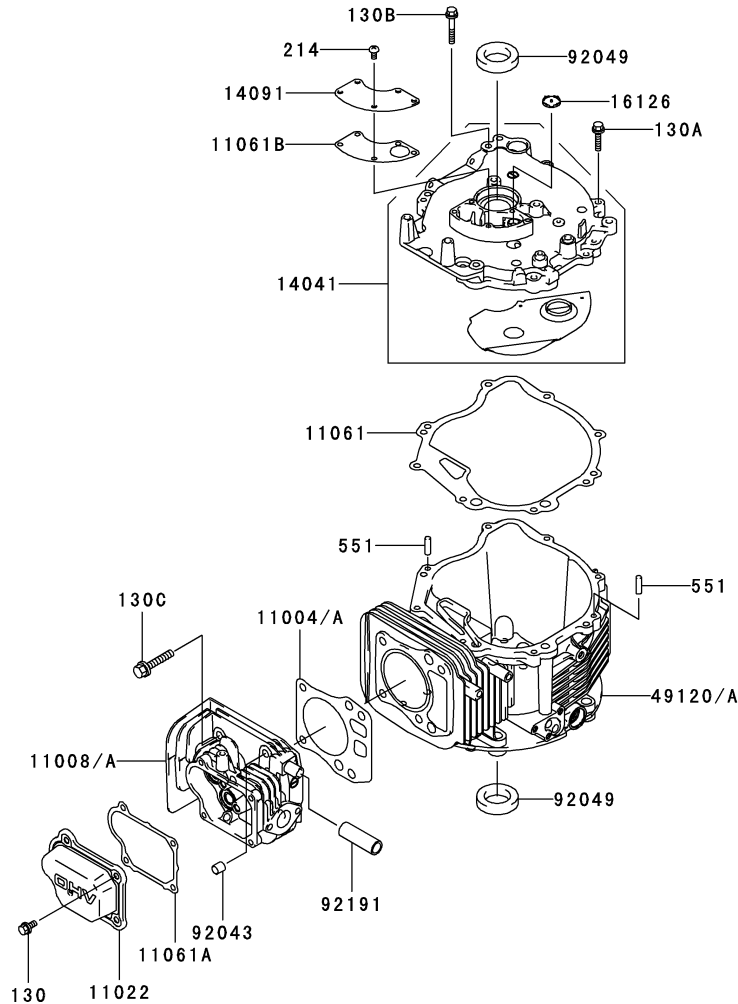
GRID NO.

B-03

This grid covers:

CYLINDER/CRANKCASE

E0110-A472B



Ref. No.	Part No.	Description	Quantity
11004	11004-7014	GASKET-HEAD	*
11004A	11004-7020	GASKET-HEAD	1
11008	11008-7015	HEAD-COMP-CYLINDER	*
11008A	11008-7025	HEAD-COMP-CYLINDER	1
11022	11022-7005	CASE-ROCKER	1
11061	11061-7020	GASKET,COVER-CRANKCASE	1
11061A	11061-7023	GASKET,CASE ROCKER	1
11061B	11061-7031	GASKET,BREATHER	1
14041	14041-7001	COVER-COMP	1
14091	14091-7010	COVER,BREATHER	1
16126	16126-7014	VALVE,BREATHER	1
49120	49120-7041	CRANKCASE-COMP	*
49120A	49120-7046	CRANKCASE-COMP	1
92043	92043-7001	PIN	2
92049	92049-7008	SEAL-OIL,28-44-9 TC	2
92191	92191-7025	TUBE,12X16X49	1
130	130B0612	BOLT-FLANGED	4
130A	130G0625	BOLT-FLANGED	7
130B	130G0635	BOLT-FLANGED	1
130C	130T0840	BOLT-FLANGED	4
214	214B0510	SCREW-PAN+-	5
551	551A0612	PIN-DOWEL	2

This catalog covers:

FJ180V- □ S53

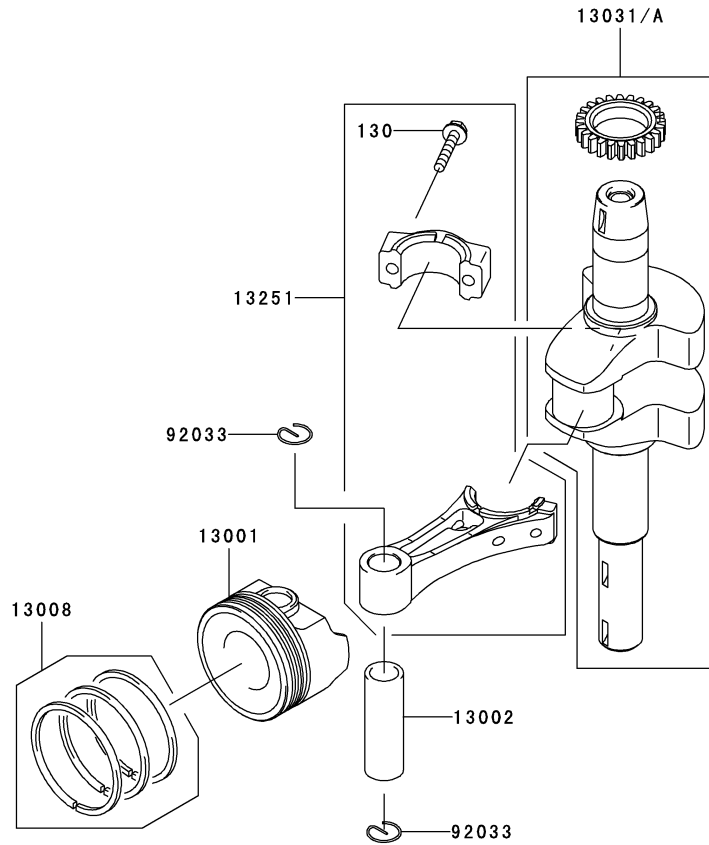
GRID NO.

B-04

This grid covers:

PISTON/CRANKSHAFT

E0120-A263C



Ref. No.	Part No.	Description	Quantity
13001	13001-7009	PISTON-ENGINE	1
13002	13002-7001	PIN-PISTON	1
13008	13008-7001	RING-SET-PISTON	1
13031	13031-7062	CRANKSHAFT-COMP	*
13031A	13031-7065	CRANKSHAFT-COMP	1
13251	13251-7011	ROD-ASSY-CONNECTING	1
92033	92033-7005	RING-SNAP	2
130	130G0630	BOLT-FLANGED	2

This catalog covers:

FJ180V- □ S53

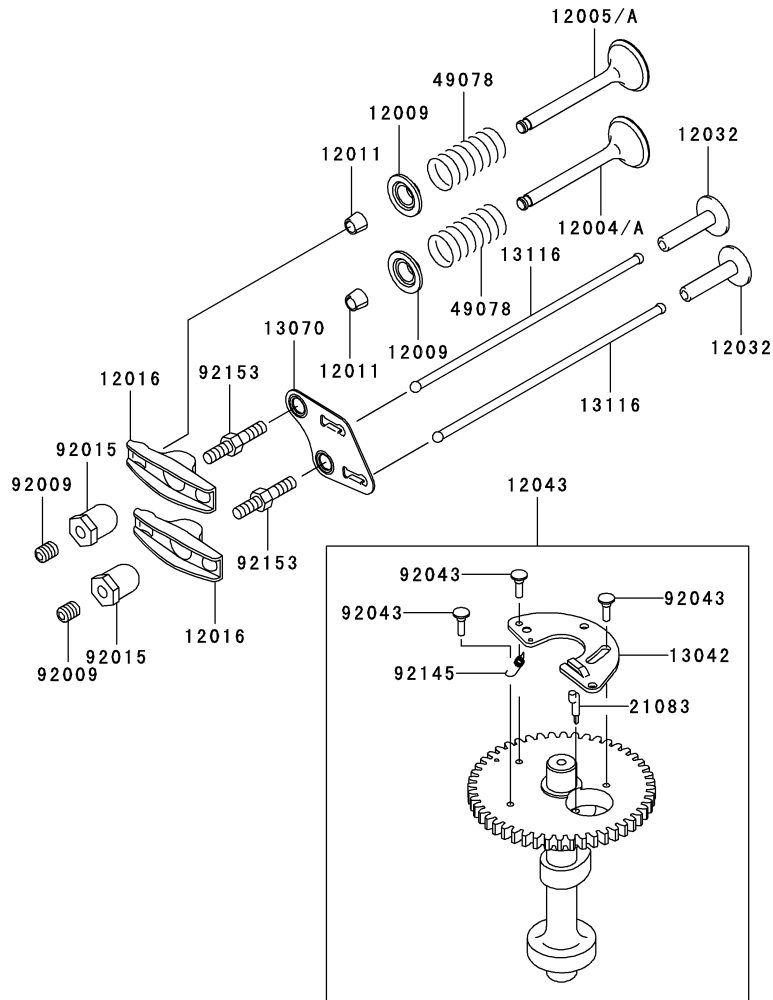
GRID NO.

B-05

This grid covers:

VALVE/CAMSHAFT

E0130-A111F



Ref. No.	Part No.	Description	Quantity
12004	12004-7003	VALVE-INTAKE	*
12004A	12004-7005	VALVE-INTAKE	1
12005	12005-7003	VALVE-EXHAUST	*
12005A	12005-7006	VALVE-EXHAUST	1
12009	12009-7001	RETAINER-VALVE SPRING	2
12011	12011-2056	COLLET	4
12016	12016-7001	ARM-ROCKER	2
12032	12032-7001	TAPPET	2
12043	12043-7004	CAMSHAFT-ASSY-VALVE	1
13042	13042-7006	WEIGHT	1
13070	13070-7009	GUIDE	1
13116	13116-7003	ROD-PUSH	2
21083	21083-7009	ARM	1
49078	49078-7001	SPRING-ENGINE VALVE	2
92009	92009-2341	SCREW	2
92015	92015-2253	NUT	2
92043	92043-7006	PIN	3
92145	92145-7016	SPRING	1
92153	92153-7019	BOLT	2

This catalog covers:

FJ180V- □ S53

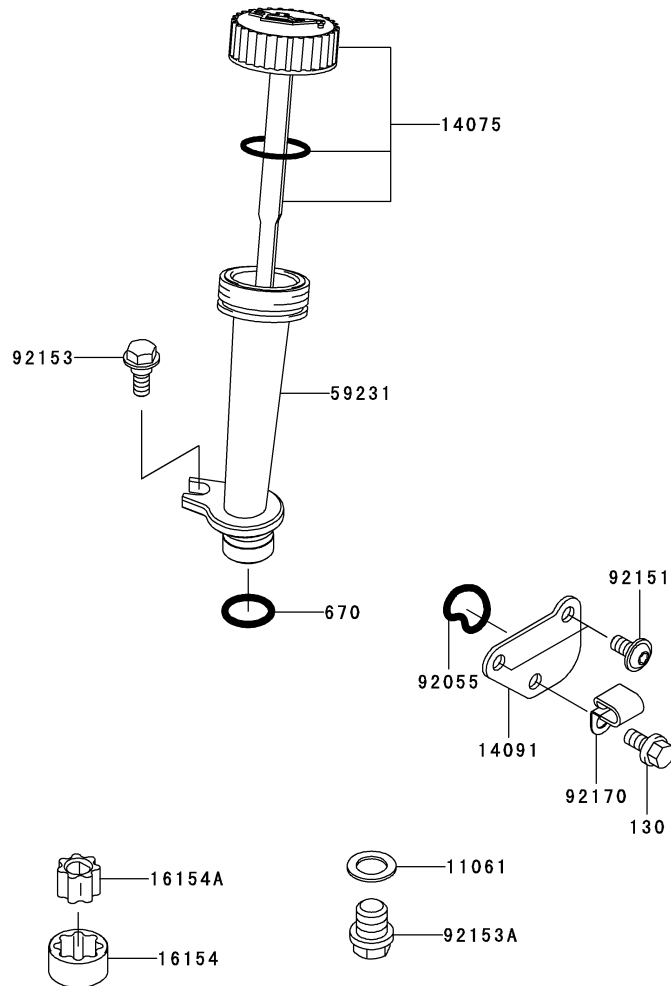
GRID NO.

B-06

This grid covers:

LUBRICATION-EQUIPMENT

E0140-A287A



Ref. No.	Part No.	Description	Quantity
11061	11061-7030	GASKET,12X19X1.27	1
14075	14075-7007	CAP-ASSY	1
14091	14091-7011	COVER,OIL FILTER	1
16154	16154-7002	ROTOR-PUMP	1
16154A	16154-7004	ROTOR-PUMP	1
59231	59231-7004	FILLER	1
92055	92055-2151	RING-O	1
92151	92151-7012	BOLT,6X12	2
92153	92153-7007	BOLT	1
92153A	92153-7016	BOLT,12X12	1
92170	92170-1577	CLAMP	1
130	130B0612	BOLT-FLANGED	1
670	670D2016	O RING,16MM	1

This catalog covers:

FJ180V- □ S53

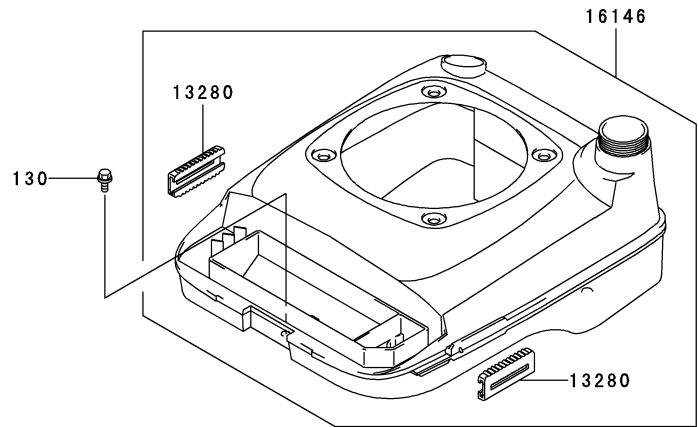
GRID NO.

B-07

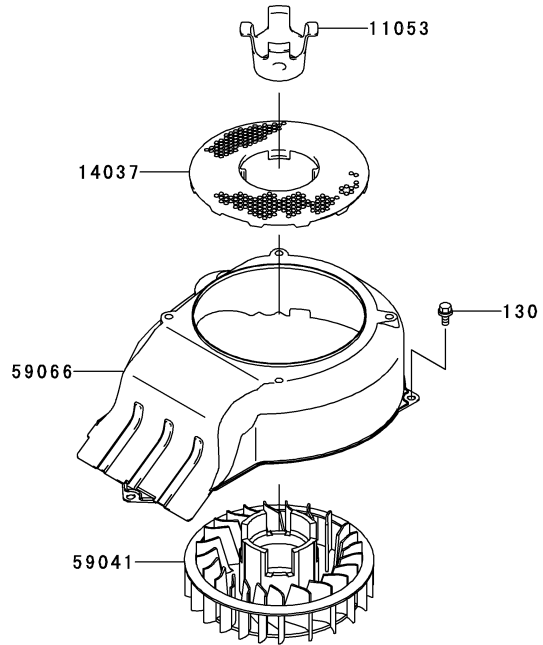
This grid covers:

COOLING-EQUIPMENT

E0150-A560A



Ref. No.	Part No.	Description	Quantity
11053	11053-7009	BRACKET,FAN	1
13280	13280-7001	HOLDER	2
14037	14037-7017	SCREEN	1
16146	16146-7012	COVER-ASSY	1
59041	59041-7009	FAN	1
59066	59066-7016	HOUSING-FAN	1
130	130B0612	BOLT-FLANGED	2



This catalog covers:

FJ180V- □ S53

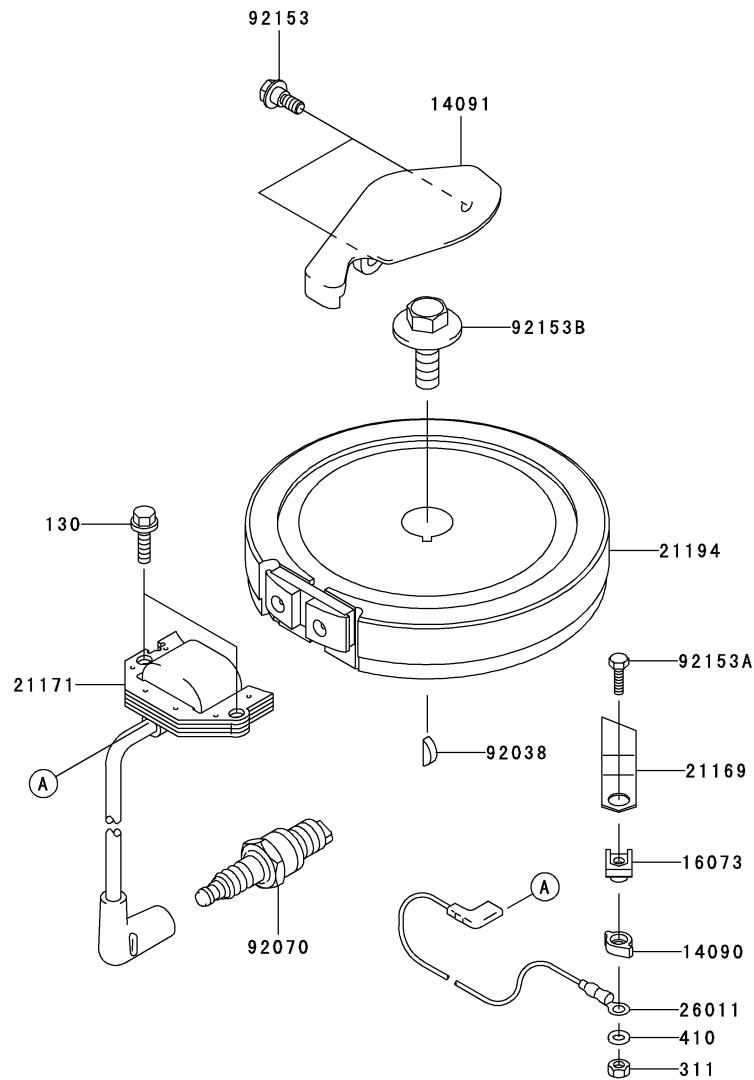
GRID NO.

B-08

This grid covers:

ELECTRIC-EQUIPMENT

E0160-A990A



Ref. No.	Part No.	Description	Quantity
			A
14090	14090-2108	COVER	1
14091	14091-7036	COVER	1
16073	16073-2192	INSULATOR	1
21169	21169-2071	TERMINAL	1
21171	21171-7010	COIL-ASSY-IGNITION	1
21194	21194-7019	FLYWHEEL-COMP	1
26011	26011-7013	WIRE-LEAD	1
92038	92038-2077	KEY	1
92070	92070-2088	PLUG-SPARK,BPR5ES(NGK),SOLID	1
92153	92153-7007	BOLT	2
92153A	92153-7012	BOLT,4X16	1
92153B	92153-7030	BOLT,12X30	1
130	130B0620	BOLT-FLANGED	2
311	311B0400	NUT-HEX	1
410	410B0400	W-PLAIN-S	1

This catalog covers:

FJ180V- □ S53

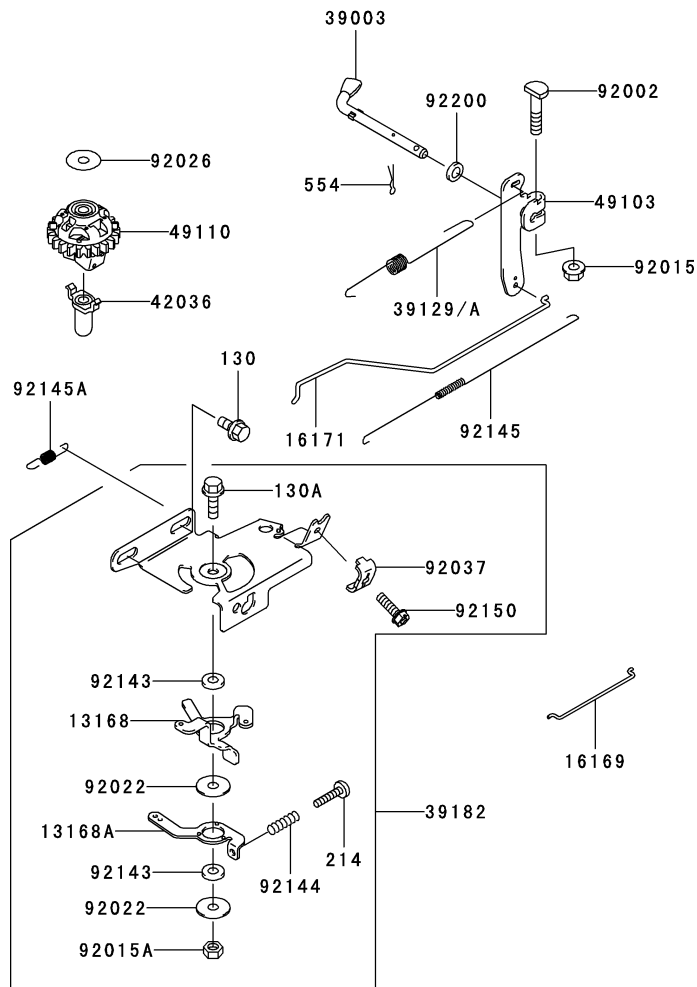
GRID NO.

B-09

This grid covers:

CONTROL-EQUIPMENT

E0170-A478A



Ref. No.	Part No.	Description	Quantity
13168	13168-7020	LEVER	1
13168A	13168-7022	LEVER	1
16169	16169-7011	LINK-CHOKE	1
16171	16171-7015	LINK,THROTTLE	1
39003	39003-7002	ARM-PIVOT	1
39129	39129-7013	SPRING-GOVERNOR	*
39129A	39129-7014	SPRING-GOVERNOR	1
39182	39182-7005	PANEL-ASSY-CONTROL	1
42036	42036-2051	SLEEVE	1
49103	49103-7005	ARM-GOVERNOR	1
49110	49110-7002	GOVERNOR-ASSY	1
92002	92002-2269	BOLT	1
92015	92015-1193	NUT	1
92015A	92015-2051	NUT	1
92022	92022-2372	WASHER,6X19X1.2	2
92026	92200-2036	SPACER	1
92037	92037-2209	CLAMP	1
92143	92143-2135	COLLAR,6X13X2.3	2
92144	92144-2266	SPRING	1
92145	92145-7025	SPRING,THROTTLE	1
92145A	92145-7032	SPRING	1
92150	92150-2182	BOLT,5X18	1
92200	92200-2029	WASHER,6.5X11.5X2.0	1
130	130B0612	BOLT-FLANGED	2
130A	130B0618	BOLT-FLANGED	1
214	214B0420	SCREW-PAN+-	1
554	554A0600	PIN-SNAP	1

This catalog covers:

FJ180V- □ S53

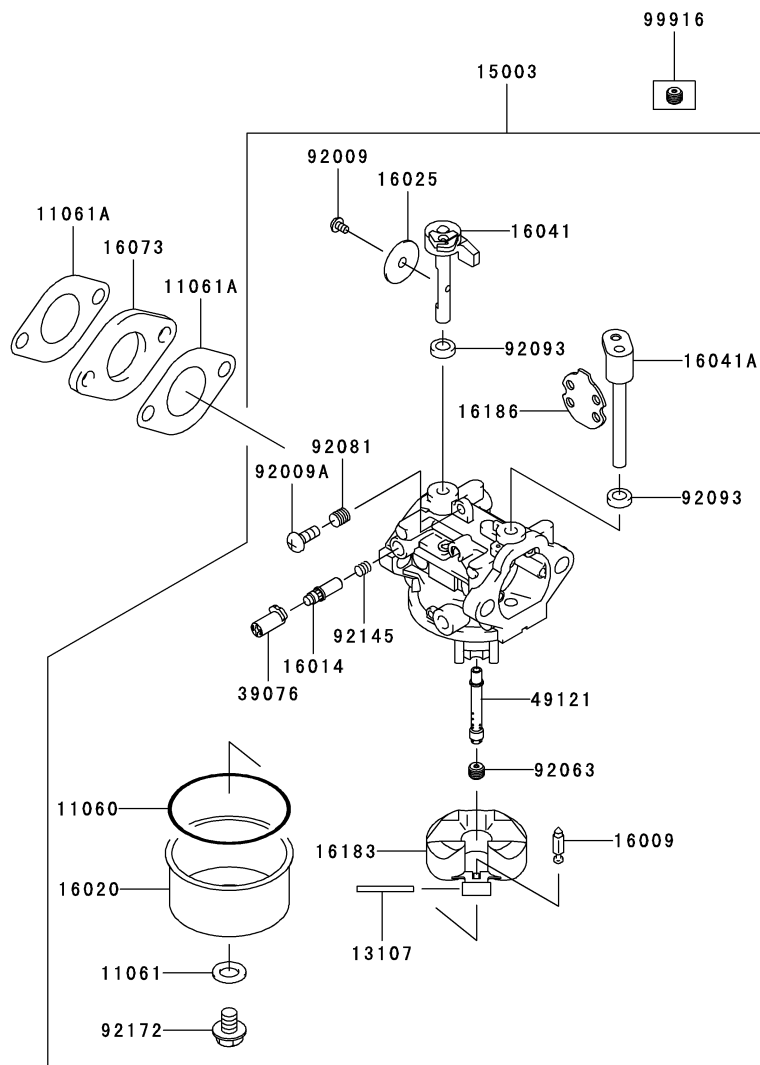
GRID NO.

B-10

This grid covers:

CARBURETOR

E0180-A592A



Ref. No.	Part No.	Description	Quantity
			A
11060	11060-2190	GASKET	1
11061	11061-7010	GASKET,SCREW	1
11061A	11061-7015	GASKET,INSULATOR	2
13107	13107-7024	SHAFT	1
15003	15003-7110	CARBURETOR-ASSY	1
16009	16009-2136	NEEDLE-JET	1
16014	16014-7008	SCREW-PILOT AIR	1
16020	16020-7004	CHAMBER-FLOAT	1
16025	16025-7007	VALVE-THROTTLE	1
16041	16041-7019	SHAFT-CARBURETOR	1
16041A	16041-7020	SHAFT-CARBURETOR	1
16073	16073-7006	INSULATOR	1
16183	16183-2002	FLOAT-ASSY	1
16186	16186-7003	VALVE-ASSY-CHOKE	1
39076	39076-7001	LIMITER	1
49121	49121-7008	NOZZLE-MAIN	1
92009	92009-2083	SCREW	1
92009A	92009-2349	SCREW	1
92063	92063-7049	JET-MAIN,#74	1
92081	92081-2234	SPRING	1
92093	92093-2100	SEAL	2
92145	92145-7015	SPRING	1
92172	92172-7002	SCREW	1
99916	99916-7007	KIT-KHI PARTS,JET-MAIN	AR

This catalog covers:

FJ180V- □ S53

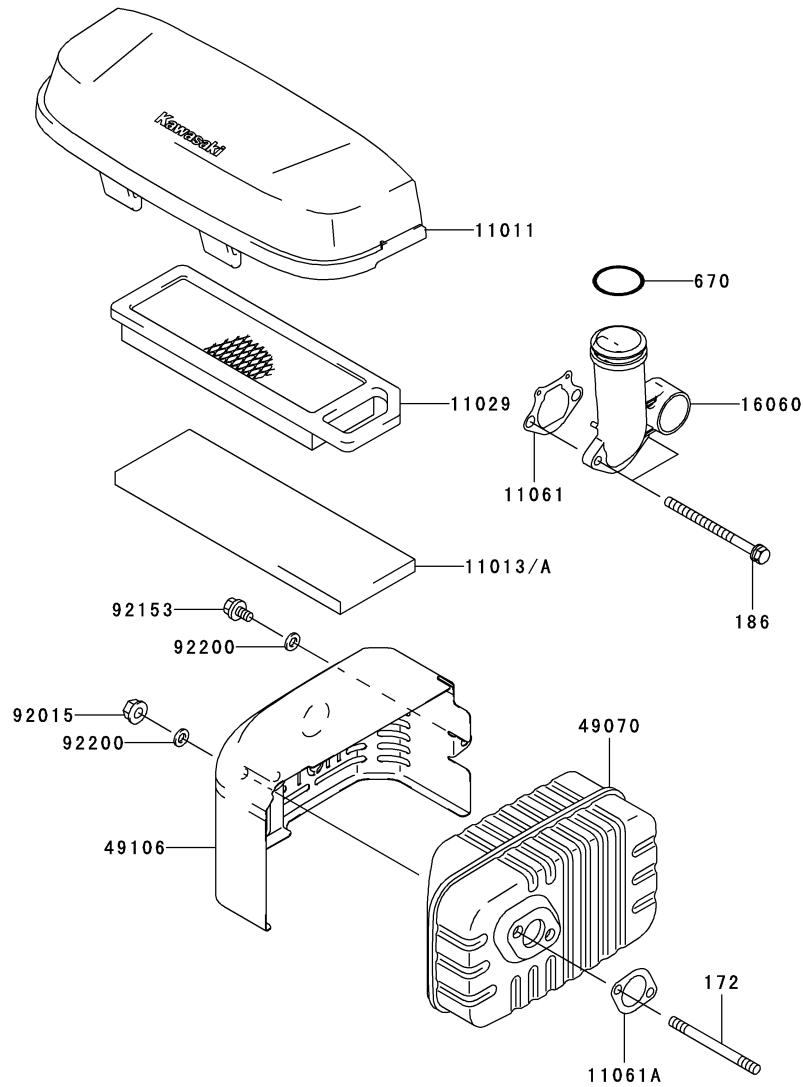
GRID NO.

B-11

This grid covers:

AIR-FILTER/MUFFLER

E0190-A751A



Ref. No.	Part No.	Description	Quantity
11011	11011-7025	CASE-AIR FILTER	1
11013	11013-7018	ELEMENT-AIR FILTER	*
11013A	11013-7032	ELEMENT-AIR FILTER	1
11029	11029-7010	ELEMENT-ASSY-AIR FILTER	1
11061	11061-7012	GASKET,PIPE INTAKE	1
11061A	11061-7029	GASKET,MUFFLER	1
16060	16060-7012	PIPE-INTAKE	1
49070	49070-7019	MUFFLER-COMP	1
49106	49106-7011	COVER-MUFFLER	1
92015	92015-1193	NUT	2
92153	92153-7023	BOLT	1
92200	92200-7022	WASHER,6.4X12X1.6	3
172	172G0680	BOLT-STUD	2
186	186B0680	BOLT-UPSET-WP	2
670	670B3032	O RING,32MM	1

This catalog covers:

FJ180V- □ S53

GRID NO.

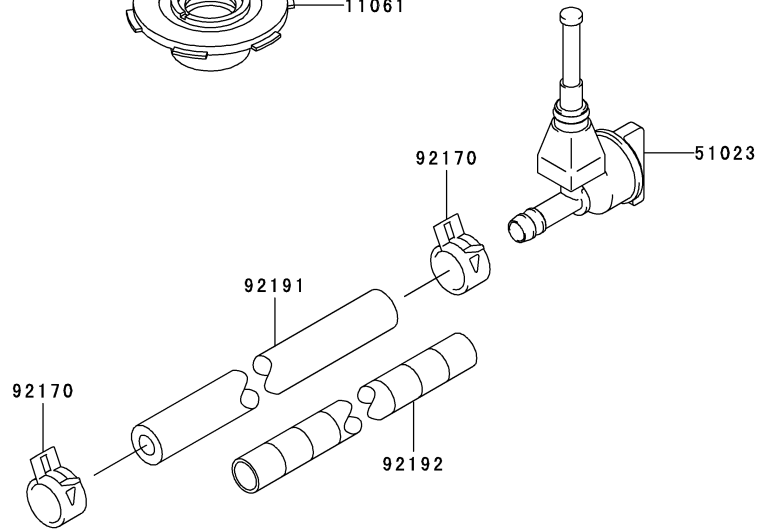
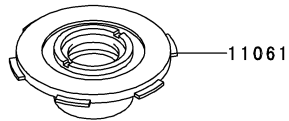
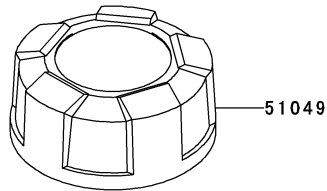
C-03

This grid covers:

FUEL-TANK/FUEL-VALVE

E0200-A445C

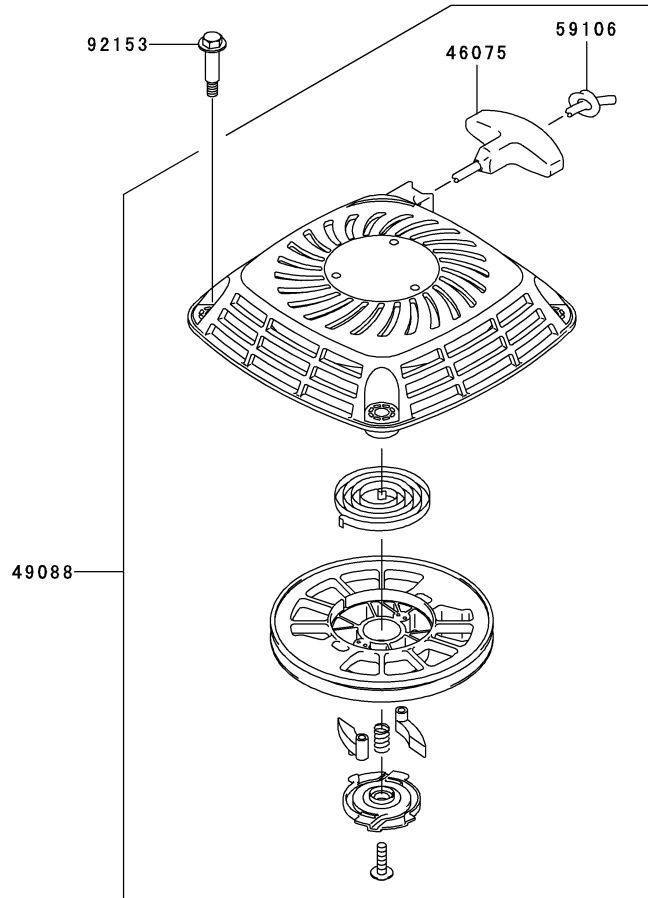
Ref. No.	Part No.	Description	Quantity
11061	11061-7036	GASKET	1
51023	51023-7001	TAP-ASSY	1
51049	51049-7002	CAP-TANK	1
92170	92170-2088	CLAMP	2
92191	92191-2037	TUBE,6.35X12.7X255	1
92192	92192-7007	TUBE	1



This catalog covers:
FJ180V- □ S53

GRID NO. This grid covers:
C-04 STARTER

E0210-A279C



Ref. No.	Part No.	Description	Quantity
46075	46075-7002	GRIP	1
49088	49088-7017	STARTER-RECOIL	1
59106	59106-7003	ROPE,2200MM	1
92153	92153-7021	BOLT,M6	4

This catalog covers:
FJ180V- □ S53

GRID NO. This grid covers:
D-03 LABEL

F0290-B072A

Ref. No.	Part No.	Description	Quantity
56070	56070-2021	LABEL-WARNING	1
56080	56080-7019	LABEL-BRAND	1

56070



56080



This catalog covers:

FJ180V- □ S53

GRID NO.

H-09

This grid covers:

PART NAME INDEX

AIR-FILTER/MUFFLER.....	B-11
CARBURETOR.....	B-10
CONTROL-EQUIPMENT.....	B-09
COOLING-EQUIPMENT.....	B-07
CYLINDER/CRANKCASE.....	B-03
ELECTRIC-EQUIPMENT.....	B-08
FUEL-TANK/FUEL-VALVE.....	C-03
LABEL.....	D-03
LUBRICATION-EQUIPMENT.....	B-06
PISTON/CRANKSHAFT.....	B-04
STARTER.....	C-04
VALVE/CAMSHAFT.....	B-05

This catalog covers:

FJ180V- □ S53

GRID NO.

H-10

This grid covers:

NUMERICAL PARTS INDEX

Part No.	Grid No.	Part No.	Grid No.	Part No.	Grid No.	Part No.	Grid No.	Part No.	Grid No.
11004-7014.....	B-03	16009-2136.....	B-10	92015-1193.....	B-09				
11004-7020.....	B-03	16014-7008.....	B-10	92015-1193.....	B-11				
11008-7015.....	B-03	16020-7004.....	B-10	92015-2051.....	B-09				
11008-7025.....	B-03	16025-7007.....	B-10	92015-2253.....	B-05				
11011-7025.....	B-11	16041-7019.....	B-10	92022-2372.....	B-09				
11013-7018.....	B-11	16041-7020.....	B-10	92033-7005.....	B-04				
11013-7032.....	B-11	16060-7012.....	B-11	92037-2209.....	B-09				
11022-7005.....	B-03	16073-2192.....	B-08	92038-2077.....	B-08				
11029-7010.....	B-11	16073-7006.....	B-10	92043-7001.....	B-03				
11053-7009.....	B-07	16126-7014.....	B-03	92043-7006.....	B-05				
11060-2190.....	B-10	16146-7012.....	B-07	92049-7008.....	B-03				
11061-7010.....	B-10	16154-7002.....	B-06	92055-2151.....	B-06				
11061-7012.....	B-11	16154-7004.....	B-06	92063-7049.....	B-10				
11061-7015.....	B-10	16169-7011.....	B-09	92070-2088.....	B-08				
11061-7020.....	B-03	16171-7015.....	B-09	92081-2234.....	B-10				
11061-7023.....	B-03	16183-2002.....	B-10	92093-2100.....	B-10				
11061-7029.....	B-11	16186-7003.....	B-10	92143-2135.....	B-09				
11061-7030.....	B-06	172G0680.....	B-11	92144-2266.....	B-09				
11061-7031.....	B-03	186B0680.....	B-11	92145-7015.....	B-10				
11061-7036.....	C-03	21083-7009.....	B-05	92145-7016.....	B-05				
12004-7003.....	B-05	21169-2071.....	B-08	92145-7025.....	B-09				
12004-7005.....	B-05	21171-7010.....	B-08	92145-7032.....	B-09				
12005-7003.....	B-05	21194-7019.....	B-08	92150-2182.....	B-09				
12005-7006.....	B-05	214B0420.....	B-09	92151-7012.....	B-06				
12009-7001.....	B-05	214B0510.....	B-03	92153-7007.....	B-06				
12011-2056.....	B-05	26011-7013.....	B-08	92153-7007.....	B-08				
12016-7001.....	B-05	311B0400.....	B-08	92153-7012.....	B-08				
12032-7001.....	B-05	39003-7002.....	B-09	92153-7016.....	B-06				
12043-7004.....	B-05	39076-7001.....	B-10	92153-7019.....	B-05				
13001-7009.....	B-04	39129-7013.....	B-09	92153-7021.....	C-04				
13002-7001.....	B-04	39129-7014.....	B-09	92153-7023.....	B-11				
13008-7001.....	B-04	39182-7005.....	B-09	92153-7030.....	B-08				
13031-7062.....	B-04	410B0400.....	B-08	92170-1577.....	B-06				
13031-7065.....	B-04	42036-2051.....	B-09	92170-2088.....	C-03				
13042-7006.....	B-05	46075-7002.....	C-04	92172-7002.....	B-10				
13070-7009.....	B-05	49070-7019.....	B-11	92191-2037.....	C-03				
130B0612.....	B-03	49078-7001.....	B-05	92191-7025.....	B-03				
130B0612.....	B-06	49088-7017.....	C-04	92192-7007.....	C-03				
130B0612.....	B-07	49103-7005.....	B-09	92200-2029.....	B-09				
130B0612.....	B-09	49106-7011.....	B-11	92200-2036.....	B-09				
130B0618.....	B-09	49110-7002.....	B-09	92200-7022.....	B-11				
130B0620.....	B-08	49120-7041.....	B-03	99916-7007.....	B-10				
130G0625.....	B-03	49120-7046.....	B-03						
130G0630.....	B-04	49121-7008.....	B-10						
130G0635.....	B-03	51023-7001.....	C-03						
130T0840.....	B-03	51049-7002.....	C-03						
13107-7024.....	B-10	551A0612.....	B-03						
13116-7003.....	B-05	554A0600.....	B-09						
13168-7020.....	B-09	56070-2021.....	D-03						
13168-7022.....	B-09	56080-7019.....	D-03						
13251-7011.....	B-04	59041-7009.....	B-07						
13280-7001.....	B-07	59066-7016.....	B-07						
14037-7017.....	B-07	59106-7003.....	C-04						
14041-7001.....	B-03	59231-7004.....	B-06						
14075-7007.....	B-06	670B3032.....	B-11						
14090-2108.....	B-08	670D2016.....	B-06						
14091-7010.....	B-03	92002-2269.....	B-09						
14091-7011.....	B-06	92009-2083.....	B-10						
14091-7036.....	B-08	92009-2341.....	B-05						
15003-7110.....	B-10	92009-2349.....	B-10						