

Parts Catalog

MODEL

FC150V-X

PRODUCT CODE

FC150V-AS02



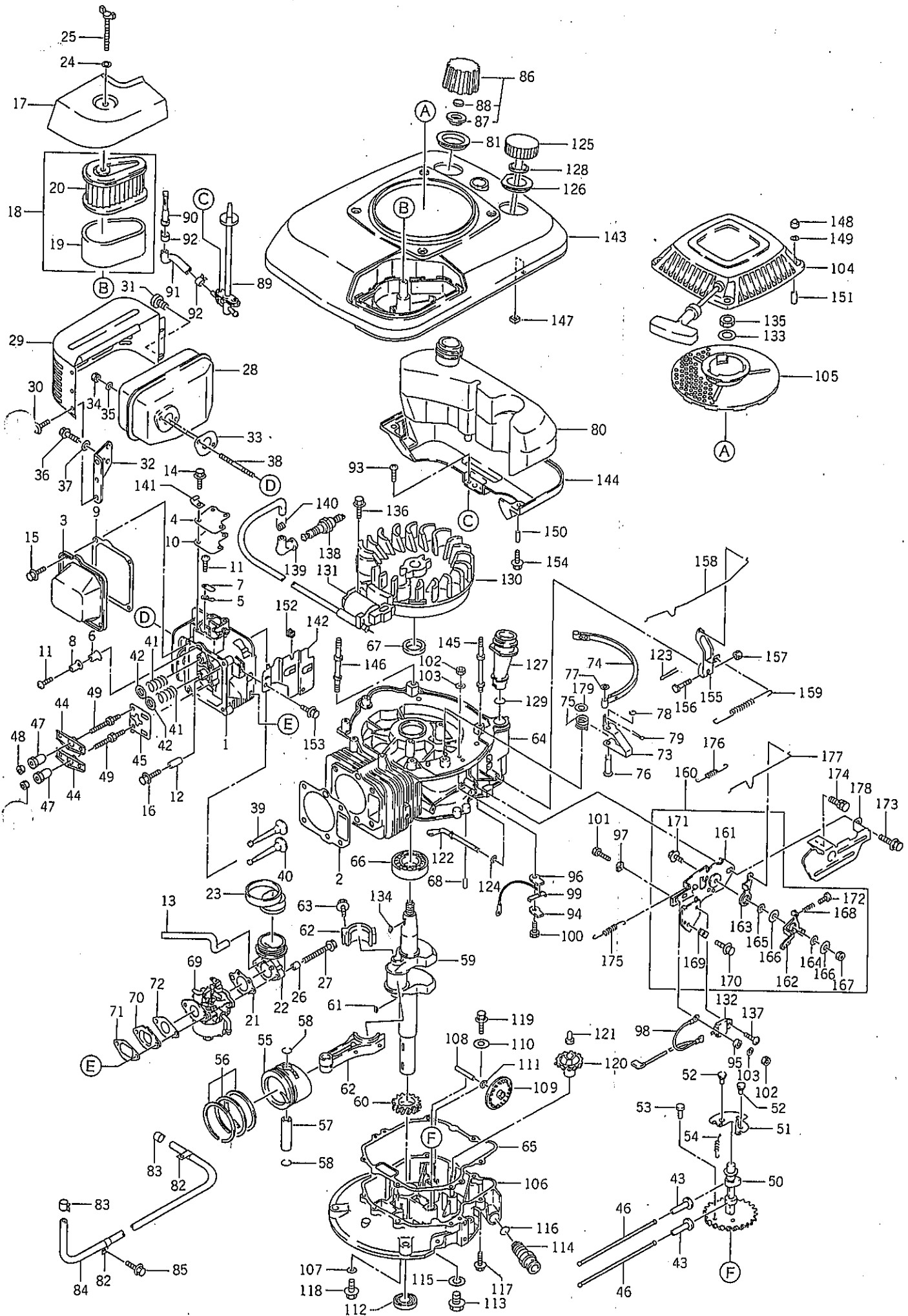
© KAWASAKI HEAVY INDUSTRIES, LTD.
ENGINE DIVISION

880203 Printed in Japan

FC150V-X FC150V-AS02(A)

Ref.No.	Part No.	Part Name	Quantity					Remarks
			A					
1	11008-6007	CYLINDER HEAD COMP	1					
2	11004-2099	GASKET, head	1					
3	11022-2057	CASE, rocker	1					
4	14024-2180	COVER	1					
5	13183-2258	PLATE	1					
6	13183-2259	PLATE	1					
7	16126-2149	VALVE	1					
8	16126-2150	VALVE	1					
9	11009-2739	GASKET	1					
10	11009-2740	GASKET	1					
11	92009-2166	SCREW	2					
12	92043-1264	PIN	2					
13	92059-2256	TUBE	1					
14	130B0510	BOLT (5x10)	4					
15	130B0612	BOLT (6x12)	4					
16	130G0845	BOLT (8x45)	4					
17	11012-2250	CAP, air filter	1					
18	11029-2002	ELEMENT ASSY	1					
19	11013-2119	•ELEMENT, air filter	1					
20	11013-2120	•ELEMENT, air filter	1					
21	11009-2742	GASKET	1					
22	16060-2129	PIPE, intake	1					
23	92059-2257	TUBE	1					
24	92022-2136	WASHER	1					
25	92150-2101	BOLT	1					
26	92026-2272	SPACER	2					
27	186B0680	BOLT (6x80)	2					
28	49070-2461	MUFFLER COMP	1					
29	49106-2430	COVER, muffler	1					
30	92009-2166	SCREW	3					
31	315801-6732A	SCREW	2					
32	11046-2053	BRACKET	1					
33	11009-2743	GASKET	1					
34	92015-1193	NUT	2					
35	312750-2383-00	WASHER	2					
36	130B0510	BOLT (5x10)	2					
37	411B0500	WASHER	2					
38	172G0680	STUD	2					
39	12004-2090	VALVE, intake	1					
40	12005-2074	VALVE, exhaust	1					
41	49078-2064	SPRING, valve	2					
42	12009-2062	RETAINER, spring	2					

FC150V-X FC150V-AS02



FC150V-X FC150V-AS02(A)

Ref.No.	Part No.	Part Name	Quantity					Remarks
			A					
43	12032-2065	TAPPET	2					
44	12016-2057	ARM, rocker	2					
45	13070-2072	GUIDE	1					
46	13116-2065	ROD, push	2					
47	92015-2239	NUT	2					
48	92015-2240	NUT	2					
49	92150-2102	BOLT	2					
50	49118-2065	CAM SHAFT COMP	1					
51	21118-2069	•DECOMPRESSOR	1					
52	92043-2168	•PIN	2					
53	92043-2169	•PIN	1					
54	92081-2342	•SPRING	1					
55	13001-2109	PISTON	1					S.T.D
	13029-2094	PISTON	AR					O/S 0.25mm
	13029-2095	PISTON	AR					O/S 0.50mm
	13027-2058	PISTON	AR					O/S 0.75mm
56	13008-6017	PISTON RING SET	1					S.T.D
	13025-6003	PISTON RING SET	AR					O/S 0.25mm
	13025-6004	PISTON RING SET	AR					O/S 0.50mm
	13024-6002	PISTON RING SET	AR					O/S 0.75mm
57	13002-2074	PIN, piston	1					
58	315501-3122A	RING, snap	2					
59	13037-2348	SHAFT, crank	1					
60	59056-2726	GEAR, helical	1					
61	92038-2093	KEY	1					
62	13251-6025	CONNECTING ROD ASSY	1					S.T.D
	13251-6027	CONNECTING ROD ASSY	AR					U/S 0.50mm
63	92150-2122	•BOLT	2					
64	49120-2176	CRANK CASE COMP	1					
65	11009-2770	GASKET	1					
66	92045-2155	BEARING, ball	1					
67	316470-4231-00	SEAL, oil	1					
68	551A0612	PIN, dowel	2					
69	15001-2785	CARBURETOR ASSY	1					Fig. C-1
70	16073-2122	INSULATOR	1					
71	11009-2745	GASKET	1					
72	11009-2746	GASKET	1					
73	43001-2051	LEVER, brake	1					
74	39187-2053	BAND, brake	1					
75	92144-2182	SPRING	1					
76	92043-2170	PIN	1					
77	410B0500	WASHER	1					

FC150V-X FC150V-AS02(A)

Ref.No.	Part No.	Part Name	Quantity					Remarks
			A					
78	482L4000	CIRCLIP	1					
79	550D2010	PIN, cotter	1					
80	51001-2203	FUEL TANK COMP	1					
81	13070-2073	GUIDE	1					
82	92037-2202	CLAMP	2					
83	317196-6812-00	CLIP	2					
84	705A041000	TUBE, braid	1					
85	130B0610	BOLT (6x10)	2					ℓ=405mm
86	51048-2068	TANK CAP ASSY	1					
87	314499-6643A	•GASKET	1					
88	318292-6656-00	•ELEMENT, breather	1					
89	49019-2090	FILTER, fuel	1					
90	49019-2091	FILTER, fuel	1					
91	92059-2262	TUBE	1					
92	92170-2009	CLAMP	2					
93	233B0510	SCREW (5x10)	2					
94	14024-2182	COVER	1					
95	14024-2183	COVER	1					
96	16073-2123	INSULATOR	1					
97	16073-2124	INSULATOR	1					
98	26011-2188	WIRE, lead	1					
99	26011-2191	WIRE, lead	1					
100	110B0516A	BOLT (5x16)	1					
101	110B0522	BOLT (5x22)	1					
102	311B0500A	NUT (5mm)	2					
103	410B0500	WASHER	2					
104	49088-2355	RECOIL STARTER ASSY	1					Fig. R-1
105	49080-2143	PULLEY, starting	1					
106	49015-6043	COVER, crank case	1					
107	11009-2747	GASKET	1					
108	13107-2202	SHAFT	1					
109	49073-2055	SLINGER, oil	1					
110	3145V1-7281A	WASHER	1					
111	3145V1-7283A	WASHER	1					
112	315801-4231A	SEAL, oil	1					
113	315470-7441A	PLUG	1					
114	92066-2172	PLUG	1					
115	315470-7214A	GASKET	1					
116	670D2015	O-RING	1					
117	130G0625	BOLT (6x25)	7					
118	130G0812	BOLT (8x12)	1					
119	187B0510	BOLT (5x10)	1					

FC150V-X FC150V-AS02(A)

Ref.No.	Part No.	Part Name	Quantity					Remarks
			A					
120	49110-2076	GOVERNOR ASSY	1					
121	314401-5121B	SLEEVE, governor	1					
122	39003-2066	ARM, pivot	1					
123	554A0600	PIN, snap	1					
124	410B0600	WASHER	1					
125	52005-2093	GAUGE	1					
126	13070-2074	GUIDE	1					
127	59231-2070	FILTER	1					
128	11009-2346	GASKET	1					
129	670D2016	O-RING	1					
130	21194-2186	FLYWHEEL COMP	1					
131	21171-2153	IGNITION COIL ASSY	1					
132	21119-2119	IGNITER	1					
133	314401-3482A	WASHER	1					
134	92038-2096	KEY (SERIAL NO. -020397)	1					
	92038-2077	KEY (SERIAL NO. 020398-)	1					
135	314G1400	NUT (14mm)	1					
136	130G0625	BOLT (6x25)	2					
137	241B0408	SCREW (4x8)	1					
138	92070-2081	PLUG, spark (NGK BP6ES)	1					
139	317270-8418B	CAP, plug	1					
140	317270-8419A	SPRING	1					
141	92037-2171	CLAMP	1					
142	14024-2181	COVER	1					
143	14024-2184	COVER	1					
144	14024-2185	COVER	1					
145	92004-2117	STUD	3					
146	92004-2119	STUD	1					
147	92015-2241	NUT	3					
148	92015-1170	NUT	4					
149	92022-2136	WASHER	4					
150	92026-2273	SPACER	3					
151	92026-2274	SPACER	4					
152	92071-2113	GROMMET	1					
153	130B0510	BOLT (5x10)	2					
154	130G0625	BOLT (6x25)	3					
155	21187-2058	ARM ASSY	1					
156	92002-2269	BOLT	1					
157	92015-1193	NUT	1					
158	16171-2059	LINK, choke	1					
159	92144-2168	SPRING	1					

FC150V-X FC150V-AS02(A)

Ref.No.	Part No.	Part Name	Quantity					Remarks
			A					
160	39180-2449	CONTROL PANEL ASSY	1					
161	59226-2195	•PANEL, control	1					
162	13168-2267	•LEVER	1					
163	13168-2268	•LEVER	1					
164	92143-2135	•COLLAR	1					
165	92143-2136	•COLLAR	1					
166	92022-2372	•WASHER	2					
167	310401-1481A	•NUT	1					
168	314401-5321B	•SPRING	1					
169	92037-2209	•CLAMP	1					
170	130B0512	•BOLT (5x12)	1					
171	130B0616	•BOLT (6x16)	1					
172	214B0416A	•SCREW (4x16)	1					
173	187B0614	BOLT (6x14)	1					
174	180B0614	BOLT (6x14)	1					
175	92144-2167	SPRING	1					
176	92081-2299	SPRING	1					
177	16169-2098	LINK, choke	1					
178	14024-2207	COVER	1					
179	92022-2389	WASHER	1					AS required

Fig. C-1 CARBURETOR

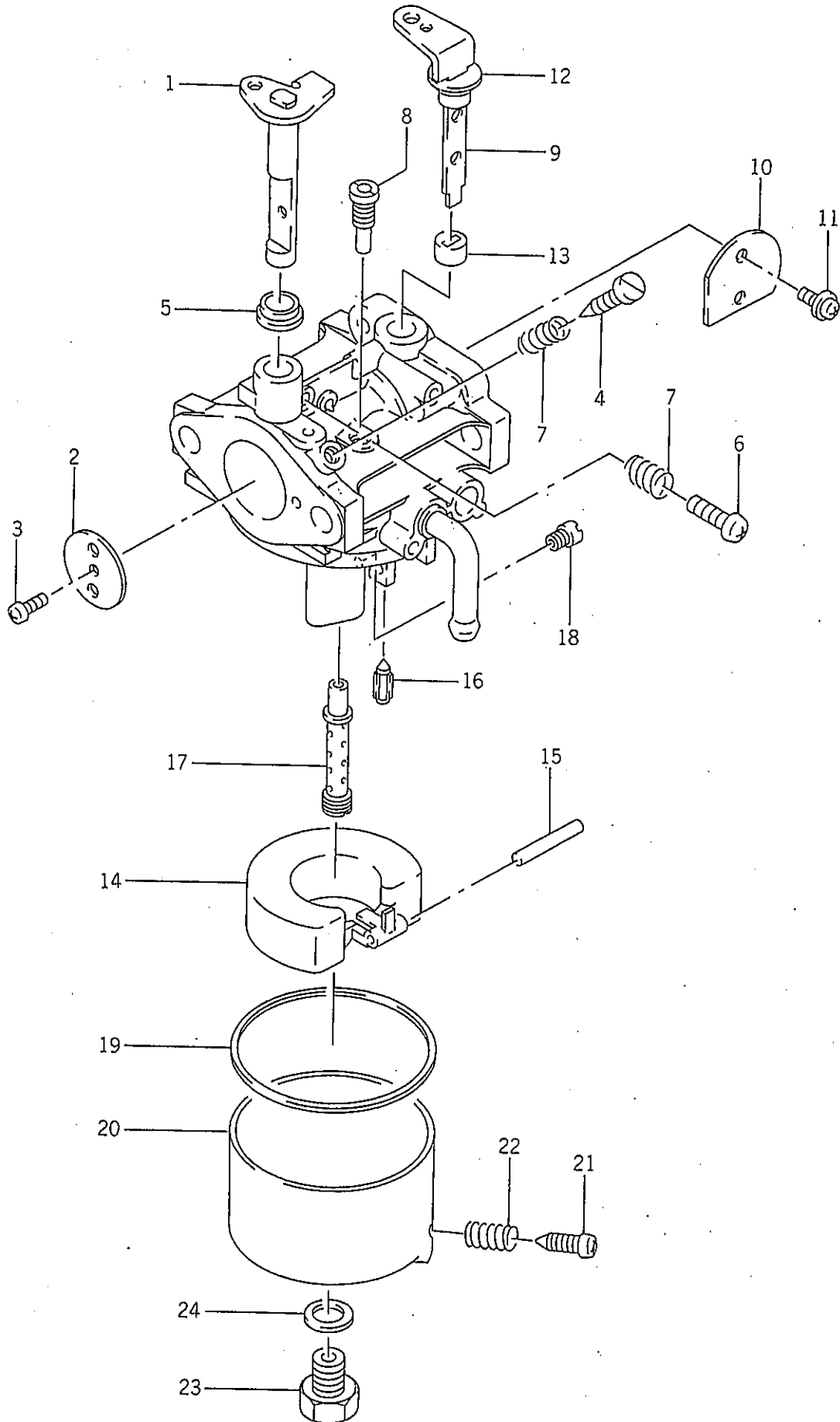
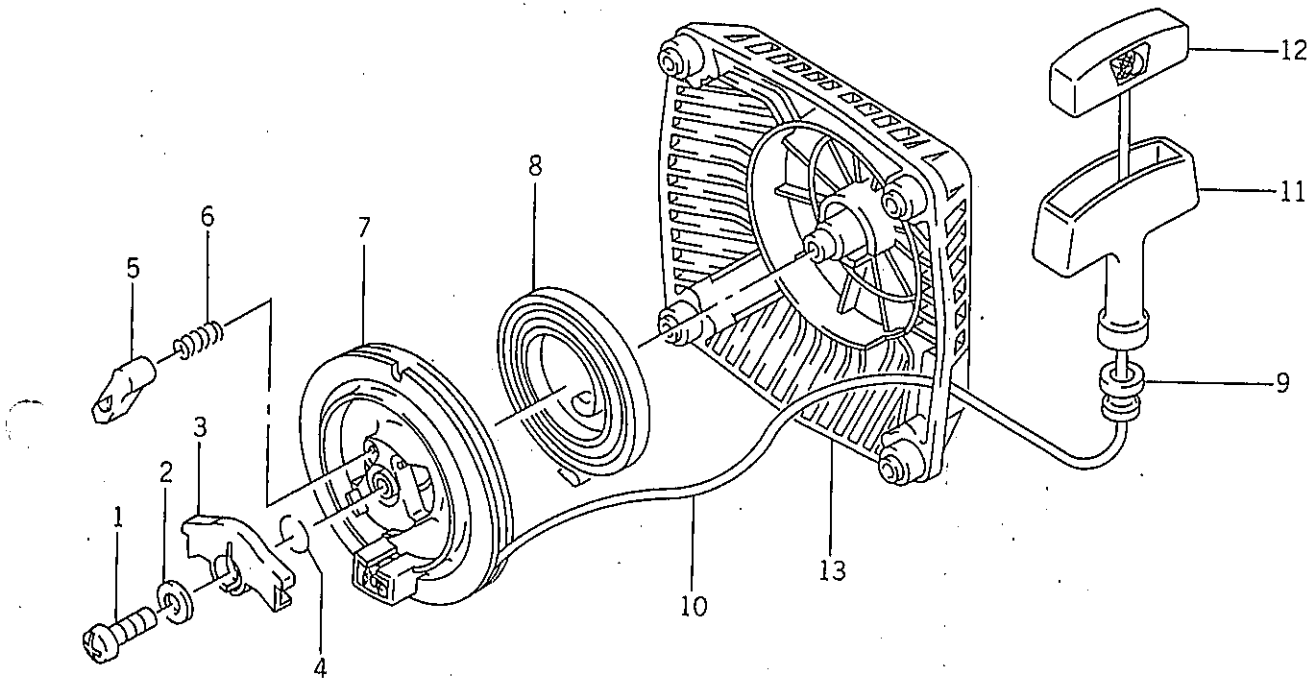


Fig. C-1, CARBURETOR

Ref.No.	Part No.	Part Name	Quantity					Remarks
			A					
	15001-2785	CARBURETOR ASSY	1					
C-1- 1	16041-2178	•SHAFT, throttle	1					
C-1- 2	16025-2138	•VALVE, throttle (#70)	1					
C-1- 3	316550-6137A	•SCREW	1					
C-1- 4	316470-6114-00	•SCREW, pilot	1					
C-1- 5	92143-2143	•COLLAR	1					
C-1- 6	214B 0412A	•SCREW (4x12)	1					
C-1- 7	313122-6116-00	•SPRING	2					
C-1- 8	313401-6112-00	•JET, pilot (#40)	1					
C-1- 9	16041-2179	•SHAFT, choke	1					
C-1-10	16126-2154	•VALVE, choke	1					
C-1-11	92009-2149	•SCREW	2					
C-1-12	314598-6157A	•RING	1					
C-1-13	314598-6138A	•RING	1					
C-1-14	16031-2058	•FLOAT	1					
C-1-15	314499-6127A	•PIN, float	1					
C-1-16	314499-6122A	•VALVE, needle	1					
C-1-17	49121-2113	•NOZZLE, main (#2A)	1					
C-1-18	92063-2096	•JET, main (#68.8)	1					
C-1-19	314598-6128A	•GASKET	1					
C-1-20	314576-6130A	•CHAMBER, float	1					
C-1-21	315470-6133A	••SCREW	1					
C-1-22	313122-6116-00	••SPRING	1					
C-1-23	314499-6143A	•BOLT	1					
C-1-24	314499-6159A	•GASKET	1					

Fig. R-1 RECOIL STARTER



Ref.No.	Part No.	Part Name	Quantity					Remarks
			A					
	49088-2355	RECOIL STARTER ASSY	1					
R-1- 1	92009-2280	•SCREW	1					
R-1- 2	92022-2384	•WASHER	1					
R-1- 3	39108-2059	•RETAINER, spring	1					
R-1- 4	92144-2176	•SPRING	1					
R-1- 5	13165-2072	•PAWL	1					
R-1- 6	92144-2177	•SPRING, return	1					
R-1- 7	59101-2079	•REEL, recoil	1					
R-1- 8	315601-3452A	•SPRING, recoil	1					
R-1- 9	13070-2064	•GUIDE, rope	1					
R-1-10	59106-2107	•ROPE (3.8x2610)	1					
R-1-11	46075-2082	•GRIP	1					
R-1-12	11012-2255	•CAP, grip	1					
R-1-13	13091-2113	•HOLDER	1					