

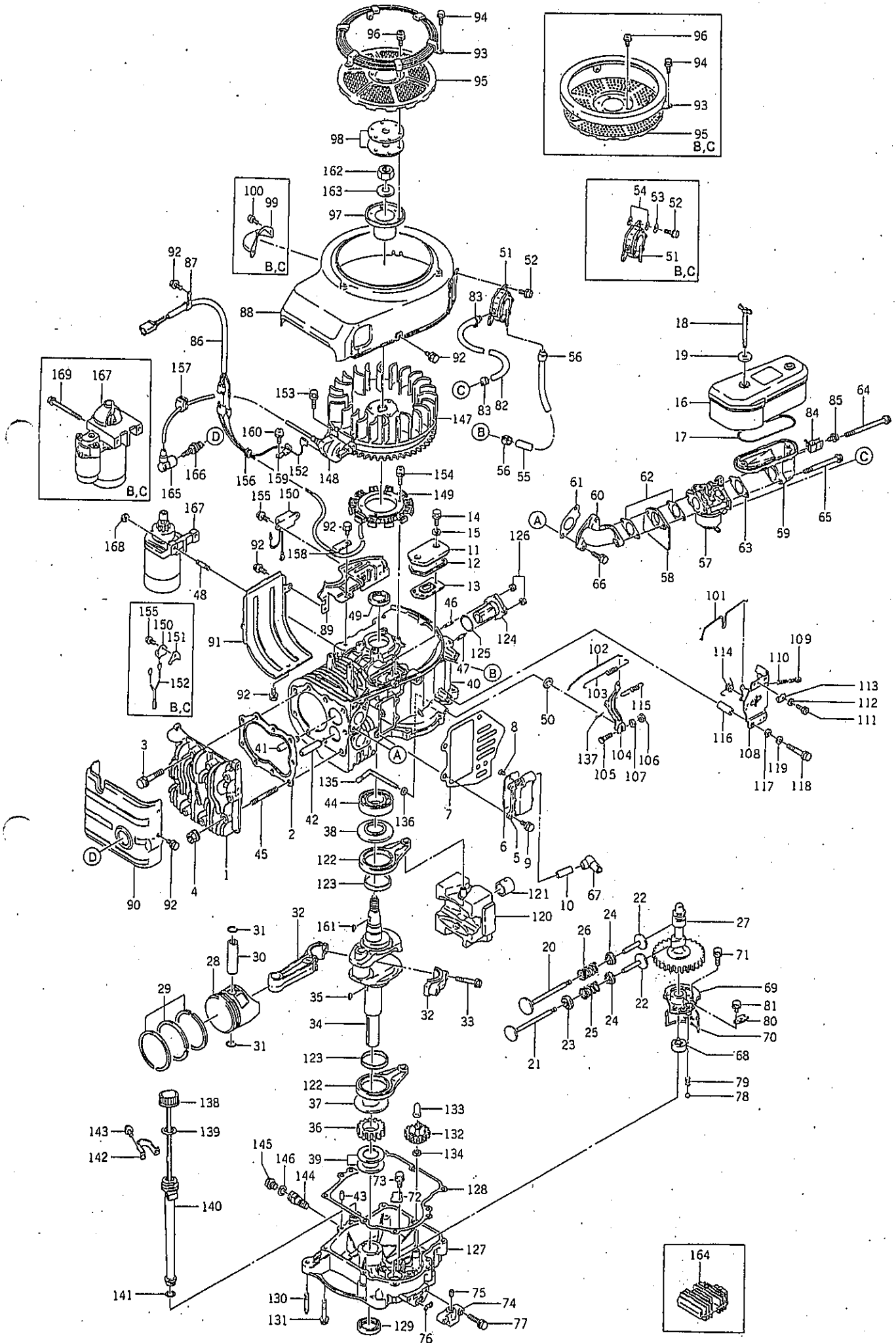
Parts Catalog

| MODEL | PRODUCT CODE |
|----------|-------------------------|
| FB460V-X | 316701A |
| FB460V-X | FB460V-AS00, BS00, CS00 |



© KAWASAKI HEAVY INDUSTRIES, LTD.
ENGINE DIVISION
870730 Printed in Japan

FB460V-X 316701A
FB460V-X FB460V-AS00,BS00,CS00



FB460V-X 316701A (A)
 FB460V-X FB460V-AS00,BS00,CS00(A,B,C)

| Ref.No. | Part No. | Part Name | Quantity | | | Remarks |
|---------|----------------|----------------------|----------|----|----|------------|
| | | | A | B | C | |
| 1 | 11001-2076 | HEAD, cylinder | 1 | 1 | | |
| | 11001-2102 | HEAD, cylinder | | | 1 | |
| 2 | 11004-2079 | GASKET, head | 1 | 1 | 1 | |
| 3 | 130G1055 | BOLT (10x55) | 6 | 6 | 6 | |
| 4 | 92015-2115 | NUT | 3 | 3 | 3 | |
| 5 | 49108-2011 | COVER, valve chamber | 1 | 1 | 1 | |
| 6 | 14025-2143 | COVER | 1 | 1 | 1 | |
| 7 | 11009-2502 | GASKET | 1 | 1 | 1 | |
| 8 | 314405-3092A | SCREW | 2 | 2 | 2 | |
| 9 | 130G0616 | BOLT (6x16) | 4 | 4 | 4 | |
| 10 | 92059-2142 | TUBE | 1 | 1 | 1 | |
| 11 | 14025-2040 | COVER | 1 | 1 | 1 | |
| 12 | 11009-2339 | GASKET | 1 | 1 | 1 | |
| 13 | 14069-2062 | BREATHER | 1 | 1 | 1 | |
| 14 | 315501-5381A | BOLT | 2 | 2 | 2 | |
| 15 | 312200-7415-02 | GASKET | 2 | 2 | 2 | |
| 16 | 11010-2222 | AIR FILTER ASSY | 1 | | | Fig. A-1 |
| | 11010-2291 | AIR FILTER ASSY | | 1 | 1 | Fig. A-1 |
| 17 | 11009-2443 | GASKET | 1 | 1 | 1 | |
| 18 | 92002-2230 | BOLT | 2 | 2 | 2 | |
| 19 | 92022-2179 | WASHER | 2 | | | |
| | 92022-2220 | WASHER | | 2 | 2 | |
| 20 | 12004-2076 | VALVE, intake | 1 | 1 | 1 | |
| 21 | 12005-2066 | VALVE, exhaust | 1 | 1 | 1 | |
| 22 | 12032-2058 | TAPPET | 2 | 2 | 2 | |
| 23 | 12039-2052 | ROTATOR | 1 | 1 | 1 | |
| 24 | 39108-2054 | RETAINER, spring | 2 | 2 | 2 | |
| 25 | 49078-2058 | SPRING, valve | 1 | 1 | 1 | |
| 26 | 49078-2059 | SPRING, valve | 1 | 1 | 1 | |
| 27 | 12044-2109 | SHAFT, cam | 1 | 1 | | |
| | 12044-2148 | SHAFT, cam | | | 1 | |
| 28 | 13001-2084 | PISTON | 1 | 1 | 1 | S.T.D |
| | 13029-2019 | PISTON | AR | AR | AR | O/S 0.25mm |
| | 13029-2020 | PISTON | AR | AR | AR | O/S 0.50mm |
| | 13027-2001 | PISTON | AR | AR | AR | O/S 0.75mm |
| 29 | 13008-6001 | PISTON RING SET | 1 | 1 | 1 | S.T.D |
| | 13008-6002 | PISTON RING SET | AR | AR | AR | O/S 0.25mm |
| | 13008-6003 | PISTON RING SET | AR | AR | AR | O/S 0.50mm |
| | 13008-6004 | PISTON RING SET | AR | AR | AR | O/S 0.75mm |
| 30 | 13002-2066 | PIN, piston | 1 | 1 | 1 | |
| 31 | 92033-2066 | RING, snap | 2 | 2 | 2 | |
| 32 | 13251-6005 | CONNECTING ROD ASSY | 1 | 1 | 1 | S.T.D |

FB460V-X 316701A (A)
 FB460V-X FB460V-AS00,BS00,CS00(A,B,C)

| Ref.No. | Part No. | Part Name | Quantity | | | Remarks |
|---------|----------------|-----------------------|----------|----|----|------------|
| | | | A | B | C | |
| 32 | 13251-6007 | CONNECTING ROD ASSY | AR | AR | AR | U/S 0.50mm |
| 33 | 315801-3245A | •BOLT, connecting rod | 2 | 2 | 2 | |
| 34 | 49119-2115 | CRANK SHAFT ASSY | 1 | 1 | | |
| | 49119-2133 | CRANK SHAFT ASSY | | | 1 | |
| 35 | 510A5100 | KEY | 1 | 1 | 1 | |
| 36 | 59056-2018 | GEAR, helical | 1 | 1 | | |
| | 59056-2105 | GEAR, helical | | | 1 | |
| 37 | 92026-2156 | SPACER | 1 | 1 | 1 | |
| 38 | 92026-2164 | SPACER | 1 | 1 | 1 | |
| 39 | 92025-2145 | SHIM | AR | AR | AR | t=1.18 |
| | 92025-2146 | SHIM | AR | AR | AR | t=1.25 |
| | 92025-2147 | SHIM | AR | AR | AR | t=1.32 |
| | 92025-2148 | SHIM | AR | AR | AR | t=1.39 |
| | 92025-2149 | SHIM | AR | AR | AR | t=1.46 |
| | 92025-2150 | SHIM | AR | AR | AR | t=1.53 |
| | 92025-2151 | SHIM | AR | AR | AR | t=1.60 |
| | 92025-2152 | SHIM | AR | AR | AR | t=1.67 |
| | 92025-2153 | SHIM | AR | AR | AR | t=1.74 |
| 40 | 49120-6001 | CRANK CASE COMP | 1 | | | |
| | 49120-6025 | CRANK CASE COMP | | 1 | 1 | |
| 41 | 49002-2070 | •GUIDE, valve (IN) | 1 | 1 | 1 | |
| 42 | 49002-2071 | •GUIDE, valve (EX) | 1 | 1 | 1 | |
| 43 | 551A0814 | PIN, dowel | 2 | | | |
| | 92043-2111 | PIN | | 2 | | |
| | 92043-1263 | PIN | | | 2 | |
| 44 | 601A6207 | BEARING, ball (6207) | 1 | 1 | 1 | |
| 45 | 92004-2082 | STUD | 3 | 3 | 3 | |
| 46 | 171G0612 | STUD | 2 | | | |
| 47 | 92004-2083 | STUD | 2 | 4 | 4 | |
| 48 | 172G0822 | STUD | 2 | | | |
| 49 | 92049-2096 | SEAL, oil | 1 | 1 | 1 | |
| 50 | 92049-2097 | SEAL, oil | 1 | 1 | 1 | |
| 51 | 49040-2058 | FUEL PUMP ASSY | 1 | 1 | 1 | Fig. P-1 |
| 52 | 130B0610 | •BOLT (6x10) | 2 | | | |
| | 130B0614 | BOLT (6x14) | | 2 | 2 | |
| 53 | 311509-3595-00 | WASHER | | 2 | 2 | |
| 54 | 92022-553 | WASHER | | 4 | 4 | |
| 55 | 705A061000 | TUBE, braid | 1 | 1 | 1 | ∅=65mm |
| 56 | 317196-6812-00 | CLIP | 2 | 2 | 2 | |
| 57 | 15001-2382 | CARBURETOR ASSY | 1 | | | Fig. C-1 |
| | 15001-2425 | CARBURETOR ASSY | | 1 | | Fig. C-1 |
| | 15001-2720 | CARBURETOR ASSY | | | 1 | Fig. C-1 |
| 58 | 16073-2091 | INSULATOR | 1 | 1 | 1 | |

FB460V-X 316701A (A)
 FB460V-X FB460V-AS00,BS00,CS00(A,B,C)

| Ref.No. | Part No. | Part Name | Quantity | | | | | | Remarks |
|---------|----------------|-----------------|----------|----|----|--|--|--|---------|
| | | | A | B | C | | | | |
| 59 | 16060-2108 | PIPE, intake | 1 | 1 | 1 | | | | |
| 60 | 16060-2109 | PIPE, intake | 1 | 1 | 1 | | | | |
| 61 | 11009-2342 | GASKET | 1 | 1 | 1 | | | | |
| 62 | 11009-2343 | GASKET | 2 | 2 | 2 | | | | |
| 63 | 11009-2344 | GASKET | 1 | 1 | 1 | | | | |
| 64 | 92002-2254 | BOLT | 1 | 1 | 1 | | | | |
| 65 | 92002-2253 | BOLT | 1 | 1 | 1 | | | | |
| 66 | 130G0825 | BOLT (8x25) | 2 | 2 | 2 | | | | |
| 67 | 59071-2062 | JOINT | 1 | 1 | 1 | | | | |
| 68 | 16082-2057 | OIL PUMP ASSY | 1 | 1 | 1 | | | | |
| 69 | 16142-6001 | PUMP COVER COMP | 1 | 1 | 1 | | | | |
| 70 | 49065-2056 | FILTER, oil | 1 | 1 | 1 | | | | |
| 71 | 130G0825 | BOLT (8x25) | 3 | 3 | 3 | | | | |
| 72 | 13169-2359 | PLATE | 1 | 1 | 1 | | | | |
| 73 | 130B0508 | BOLT (5x8) | 1 | 1 | 1 | | | | |
| 74 | 14025-2145 | COVER | 1 | 1 | 1 | | | | |
| 75 | 352101-4145A | PLUG | 1 | 1 | | | | | |
| | 92066-2102 | PLUG | | | 1 | | | | |
| 76 | 92055-2063 | O-RING | 1 | 1 | 1 | | | | |
| 77 | 130B0830 | BOLT (8x30) | 2 | 2 | 2 | | | | |
| 78 | 600A1000 | BALL, steel | 1 | 1 | 1 | | | | |
| 79 | 92081-2216 | SPRING | 1 | 1 | 1 | | | | |
| 80 | 13169-2360 | PLATE | 1 | 1 | 1 | | | | |
| 81 | 130B0610 | BOLT (6x10) | 1 | 1 | 1 | | | | |
| 82 | 705A061000 | TUBE, braid | 1 | 1 | 1 | | | | ø=210mm |
| 83 | 317196-6812-00 | CLIP | 2 | 2 | 2 | | | | |
| 84 | 92037-2019 | CLAMP | 1 | 1 | 1 | | | | |
| 85 | 224B0508 | SCREW (5x8) | 1 | 1 | 1 | | | | |
| 86 | 26001-2113 | HARNESS | 1 | 1 | 1 | | | | |
| 87 | 313646-8161-00 | CLAMP | 1 | 1 | | | | | |
| 88 | 59066-2264-9H | HOUSING, fan | 1 | | | | | | |
| | 59066-2294-9H | HOUSING, fan | | 1 | 1 | | | | |
| 89 | 59066-2238-9H | HOUSING, fan | 1 | | | | | | |
| | 59066-2295-9H | HOUSING, fan | | 1 | 1 | | | | |
| 90 | 49089-2168-9H | SHROUD | 1 | 1 | 1 | | | | |
| 91 | 49089-2169-9H | SHROUD | 1 | | | | | | |
| | 49089-2199-9H | SHROUD | | 1 | 1 | | | | |
| 92 | 130B0610 | BOLT (6x10) | 11 | 11 | | | | | |
| | 130G0610 | BOLT (6x10) | | | 11 | | | | |
| 93 | 55020-2053 | GUARD | 1 | | | | | | |
| | 55020-2060 | GUARD | | 1 | 1 | | | | |
| 94 | 130B0508 | BOLT (5x8) | 3 | 3 | 3 | | | | |
| 95 | 14037-2084-9H | SCREEN | 1 | | | | | | |

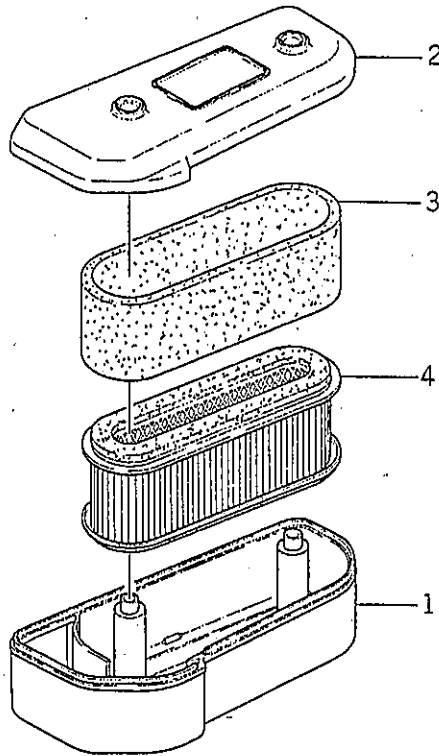
FB460V-X 316701A (A)
 FB460V-X FB460V-AS00,BS00,CS00(A,B,C)

| Ref.No. | Part No. | Part Name | Quantity | | | | | | Remarks |
|---------|----------------|-----------------------|----------|----|----|--|--|--|---------|
| | | | A | B | C | | | | |
| 95 | 14037-2104-9H | SCREEN | | 1 | 1 | | | | |
| 96 | 224B0616 | SCREW (6x16) | 3 | 3 | 3 | | | | |
| 97 | 11043-2163 | BRACKET | 1 | 1 | 1 | | | | |
| 98 | 92025-2003 | SHIM | AR | AR | AR | | | | |
| 99 | 14024-2028-9H | COVER | | 1 | 1 | | | | |
| 100 | 234B0408 | SCREW (4x8) | | 2 | 2 | | | | |
| 101 | 16169-2074 | LINK, choke | 1 | 1 | 1 | | | | |
| 102 | 16171-2001 | LINK | 1 | 1 | 1 | | | | |
| 103 | 92081-2213 | SPRING | 1 | 1 | 1 | | | | |
| 104 | 21187-2052 | GOVERNOR ARM COMP | 1 | 1 | 1 | | | | |
| 105 | 92002-2269 | BOLT | 1 | 1 | 1 | | | | |
| 106 | 311B0600 | NUT (6mm) | 1 | 1 | 1 | | | | |
| 107 | 411B0600 | WASHER | 1 | 1 | 1 | | | | |
| 108 | 49113-2058 | CONTROL PANEL ASSY | 1 | 1 | | | | | |
| | 49113-2065 | CONTROL PANEL ASSY | | | 1 | | | | |
| 109 | 214B0425 | •SCREW (4x25) | 1 | 1 | 1 | | | | |
| 110 | 314401-5321B | •SPRING | 1 | 1 | 1 | | | | |
| 111 | 315501-5381A | •BOLT | 1 | 1 | | | | | |
| | 310701-1225A | •BOLT | | | 1 | | | | |
| 112 | 411B0500 | •WASHER | 1 | 1 | | | | | |
| 113 | 92037-2020 | •CLAMP | 1 | 1 | 1 | | | | |
| 114 | 92081-2316 | •SPRING | 1 | 1 | 1 | | | | |
| 115 | 92081-2214 | SPRING | 1 | 1 | | | | | |
| | 39129-2010 | SPRING | | | 1 | | | | |
| 116 | 92027-2071 | COLLAR | 2 | 2 | 2 | | | | |
| 117 | 311509-3595-00 | WASHER | 2 | 2 | 2 | | | | |
| 118 | 112B0650 | BOLT (6x50) | 2 | 2 | 2 | | | | |
| 119 | 461F0600A | WASHER, spring | 2 | 2 | 2 | | | | |
| 120 | 13042-6005 | WEIGHT COMP | 1 | | | | | | |
| | 13042-6006 | WEIGHT COMP | | 1 | 1 | | | | |
| 121 | 92141-2007 | •BEARING, plain | 1 | | | | | | |
| | 92141-2097 | •BEARING, plain | | 1 | 1 | | | | |
| 122 | 46102-6001 | ROD ASSY | 2 | 2 | 2 | | | | |
| 123 | 92141-2094 | •BEARING, plain | 2 | 2 | 2 | | | | |
| 124 | 13107-2082 | SHAFT | 1 | | | | | | |
| | 13107-2091 | SHAFT | | 1 | 1 | | | | |
| 125 | 92055-2062 | O-RING | 1 | | | | | | |
| | 92055-2072 | O-RING | | 1 | 1 | | | | |
| 126 | 92015-1193 | NUT | 4 | 4 | 4 | | | | |
| 127 | 49015-6001 | CRANK CASE COVER COMP | 1 | 1 | 1 | | | | |
| 128 | 11009-2337 | GASKET | 1 | 1 | 1 | | | | |
| 129 | 92049-2104 | SEAL, oil | 1 | 1 | 1 | | | | |
| 130 | 92004-2081 | STUD | 2 | | | | | | |

FB460V-X 316701A (A)
 FB460V-X FB460V-AS00,BS00,CS00(A,B,C)

| Ref.No. | Part No. | Part Name | Quantity | | | Remarks |
|---------|----------------|-------------------------|----------|---|---|----------|
| | | | A | B | C | |
| 131 | 130G0845 | BOLT (8x45) | 8 | 8 | 8 | |
| 132 | 49110-2067 | GOVERNOR ASSY | 1 | 1 | 1 | |
| 133 | 42036-2060 | SLEEVE | 1 | 1 | 1 | |
| 134 | 314401-5135A | WASHER | 1 | 1 | 1 | |
| 135 | 39003-2062 | ARM, pivot | 1 | 1 | 1 | |
| 136 | 410B0600 | WASHER | 1 | 1 | 1 | |
| 137 | 554A0600 | PIN, snap | 1 | 1 | 1 | |
| 138 | 52005-2058 | GAUGE | 1 | 1 | 1 | |
| 139 | 11009-2346 | GASKET | 1 | 1 | 1 | |
| 140 | 59231-2059 | FILLER | 1 | 1 | 1 | |
| 141 | 670D2016 | O-RING | 1 | 1 | 1 | |
| 142 | 92037-2160-9H | CLAMP | 1 | 1 | 1 | |
| 143 | 130B0508 | BOLT (5x8) | 1 | 1 | 1 | |
| 144 | 59071-2063 | JOINT | 1 | 1 | | |
| | 59071-2074 | JOINT | | | 1 | |
| 145 | 92066-2092 | PLUG | 1 | 1 | 1 | |
| 146 | 317370-7883-00 | GASKET | 1 | 1 | 1 | |
| 147 | 21193-2001 | FLYWHEEL COMP | 1 | 1 | 1 | |
| 148 | 21121-2008 | COIL, ignition | 1 | 1 | 1 | |
| 149 | 59031-2003 | COIL, charging | 1 | 1 | 1 | |
| 150 | 21119-2007 | IGNITER | 1 | | | |
| | 21119-2095 | IGNITER | | 1 | 1 | |
| 151 | 310702-8137A | BRACKET | | 1 | 1 | |
| 152 | 26011-2065 | WIRE, lead | 1 | | | |
| | 26011-2119 | WIRE, lead | | 1 | 1 | |
| 153 | 130B0525 | BOLT (5x25) | 2 | 2 | 2 | |
| 154 | 224B0620 | SCREW (6x20) | 4 | 4 | 4 | |
| 155 | 234B0408 | SCREW (4x8) | 2 | 1 | 1 | |
| 156 | 92071-2099 | GROMMET | 1 | 1 | 1 | |
| 157 | 92071-2100 | GROMMET | 1 | 1 | 1 | |
| 158 | 92037-2158 | CLAMP | 1 | 1 | 1 | |
| 159 | 311901-8161A | CLAMP | 1 | 1 | 1 | |
| 160 | 234B0408 | SCREW (4x8) | 1 | 1 | 1 | |
| 161 | 510A5100 | KEY | 1 | 1 | 1 | |
| 162 | 314G1800 | NUT (18mm) | 1 | 1 | 1 | |
| 163 | 92022-2178 | WASHER | 1 | 1 | 1 | |
| 164 | 21066-2004 | REGULATOR, voltage | 1 | 1 | 1 | |
| 165 | 21130-2060 | CAP, plug | 1 | 1 | 1 | |
| 166 | 92070-2072 | PLUG, spark (NGK BMR4A) | 1 | 1 | 1 | |
| 167 | 21163-2065 | ELECTRIC STARTER ASSY | 1 | | | Fig. S-1 |
| | 21163-2070 | ELECTRIC STARTER ASSY | | 1 | 1 | Fig. S-2 |
| 168 | 92015-1143 | NUT | 2 | | | |
| 169 | 92002-2278 | BOLT | | 2 | 2 | |

Fig. A-1 AIR FILTER



| Ref.No. | Part No. | Part Name | Quantity | | | | Remarks |
|---------|------------|----------------------|----------|---|---|--|---------|
| | | | A | B | C | | |
| | 11010-2222 | AIR FILTER ASSY | 1 | | | | |
| | 11010-2291 | AIR FILTER ASSY | | 1 | 1 | | |
| A-1- 1 | 11011-2016 | •CASE, air filter | 1 | | | | |
| | 11011-2174 | •CASE, air filter | | 1 | 1 | | |
| A-1- 2 | 11012-2083 | •CAP, air filter | 1 | | | | |
| | 11012-2192 | •CAP, air filter | | 1 | 1 | | |
| A-1- 3 | 11013-2020 | •ELEMENT, air filter | 1 | 1 | 1 | | |
| A-1- 4 | 11013-2021 | •ELEMENT, air filter | 1 | 1 | 1 | | |

Fig. C-1 CARBURETOR

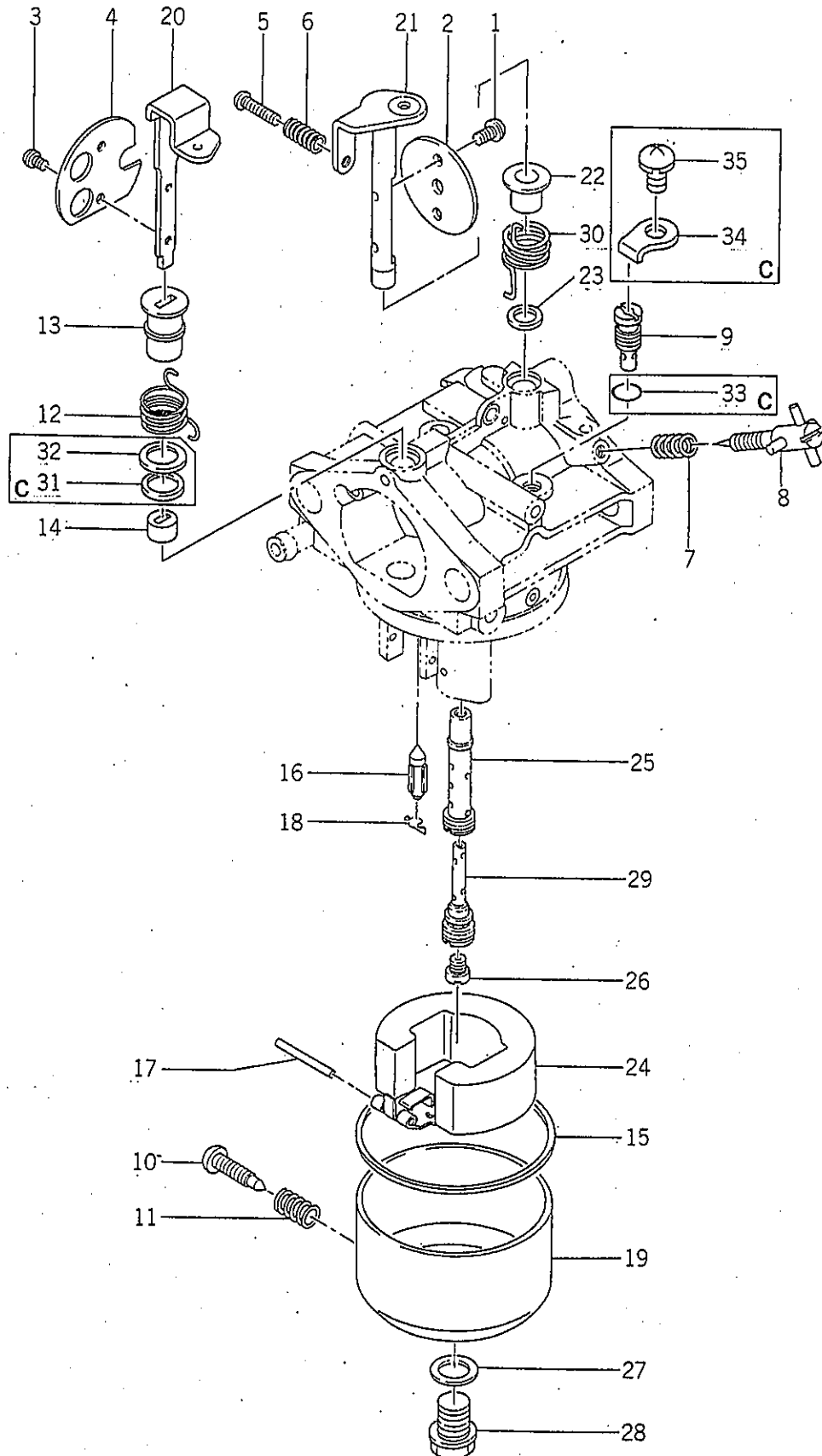
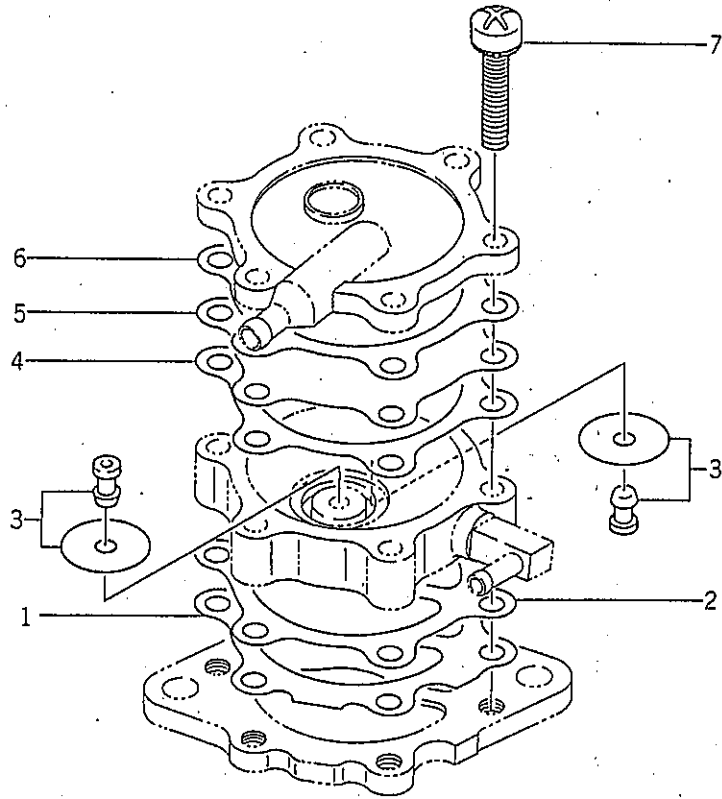


Fig. C-1 CARBURETOR

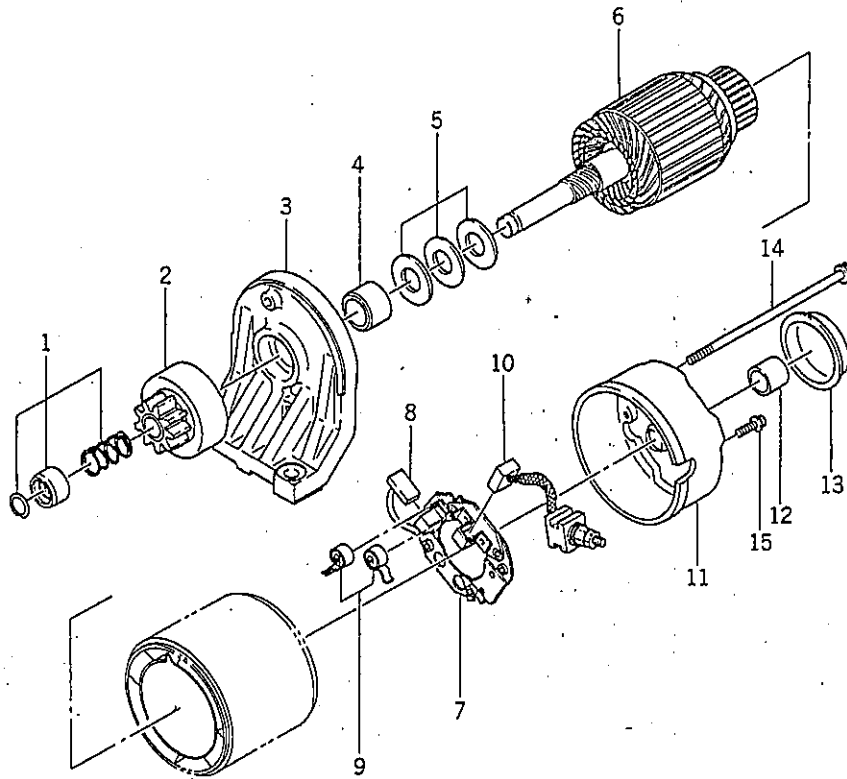
| Ref.No. | Part No. | Part Name | Quantity | | | | | Remarks |
|---------|----------------|-------------------------|----------|---|---|--|--|---------|
| | | | A | B | C | | | |
| | 15001-2382 | CARBURETOR ASSY | 1 | | | | | |
| | 15001-2425 | CARBURETOR ASSY | | 1 | | | | |
| | 15001-2720 | CARBURETOR ASSY | | | 1 | | | |
| C-1-1 | 316550-6137A | •SCREW | 2 | 2 | 2 | | | |
| C-1-2 | 16025-2005 | •VALVE, throttle (#100) | 1 | | | | | |
| | 16025-2101 | •VALVE, throttle (#120) | | 1 | 1 | | | |
| C-1-3 | 314572-6137A | •SCREW | 2 | 2 | 2 | | | |
| C-1-4 | 16126-2011 | •VALVE, choke | 1 | | | | | |
| | 16126-2105 | •VALVE, choke | | 1 | 1 | | | |
| C-1-5 | 92009-2079 | •SCREW | 1 | 1 | 1 | | | |
| C-1-6 | 313650-6108-00 | •SPRING | 1 | 1 | 1 | | | |
| C-1-7 | 312750-6116-00 | •SPRING | 1 | 1 | 1 | | | |
| C-1-8 | 16014-2055 | •SCREW, adjuster | 1 | 1 | 1 | | | |
| C-1-9 | 317490-6112-00 | •JET, pilot (#47.5) | 1 | | | | | |
| | 319201-6112-02 | •JET, pilot (#62.5) | | 1 | | | | |
| | 92064-2059 | •JET, pilot (#65) | | | 1 | | | |
| C-1-10 | 315470-6133A | •SCREW, drain | 1 | 1 | 1 | | | |
| C-1-11 | 313122-6116-00 | •SPRING | 1 | 1 | 1 | | | |
| C-1-12 | 92081-2078 | •SPRING | 1 | 1 | | | | |
| | 92144-2160 | •SPRING | | | 1 | | | |
| C-1-13 | 92027-2026 | •RING | 1 | 1 | | | | |
| | 92143-2007 | •RING | | | 1 | | | |
| C-1-14 | 314598-6138A | •RING | 1 | 1 | 1 | | | |
| C-1-15 | 313650-6128-00 | •GASKET | 1 | 1 | 1 | | | |
| C-1-16 | 16030-2021 | •VALVE, needle | 1 | | | | | |
| | 16030-2067 | •VALVE, needle | | 1 | 1 | | | |
| C-1-17 | 314499-6127A | •PIN, float | 1 | 1 | 1 | | | |
| C-1-18 | 314595-6134A | •CLIP | 1 | 1 | | | | |
| | 315721-6134A | •CLIP | | | 1 | | | |
| C-1-19 | 16020-2051 | •CHAMBER, float | 1 | 1 | | | | |
| | 16020-2094 | •CHAMBER, float | | | 1 | | | |
| C-1-20 | 16041-2010 | •SHAFT, choke | 1 | 1 | 1 | | | |
| C-1-21 | 16041-2009 | •SHAFT, throttle | 1 | 1 | 1 | | | |
| C-1-22 | 92027-2025 | •RING | 1 | 1 | 1 | | | |
| C-1-23 | 316626-6206A | •SEAL | 1 | 1 | 1 | | | |
| C-1-24 | 315801-6126A | •FLOAT | 1 | 1 | | | | |
| | 16031-2066 | •FLOAT | | | 1 | | | |
| C-1-25 | 49121-2010 | •NOZZLE, main (#6A) | 1 | | | | | |
| | 49121-2077 | •NOZZLE, main (#13A) | | 1 | 1 | | | |
| C-1-26 | 92063-2010 | •JET, main (#112.5) | 1 | 1 | 1 | | | |
| C-1-27 | 318190-6159-00 | •WASHER | 1 | 1 | 1 | | | |
| C-1-28 | 314486-6143A | •BOLT | 1 | 1 | 1 | | | |
| C-1-29 | 49123-2016 | •HOLDER, main jet | 1 | 1 | | | | |
| | 49123-2058 | •HOLDER, main jet | | | 1 | | | |
| C-1-30 | 92081-2077 | •SPRING | 1 | 1 | 1 | | | |
| C-1-31 | 92093-2069 | •SEAL | | | 1 | | | |
| C-1-32 | 92022-2242 | •WASHER | | | 1 | | | |
| C-1-33 | 16038-024 | •GASKET | | | 1 | | | |
| C-1-34 | 13183-2252 | •PLATE | | | 1 | | | |
| C-1-35 | 92009-2244 | •SCREW | | | 1 | | | |

Fig. P-1 FUEL PUMP



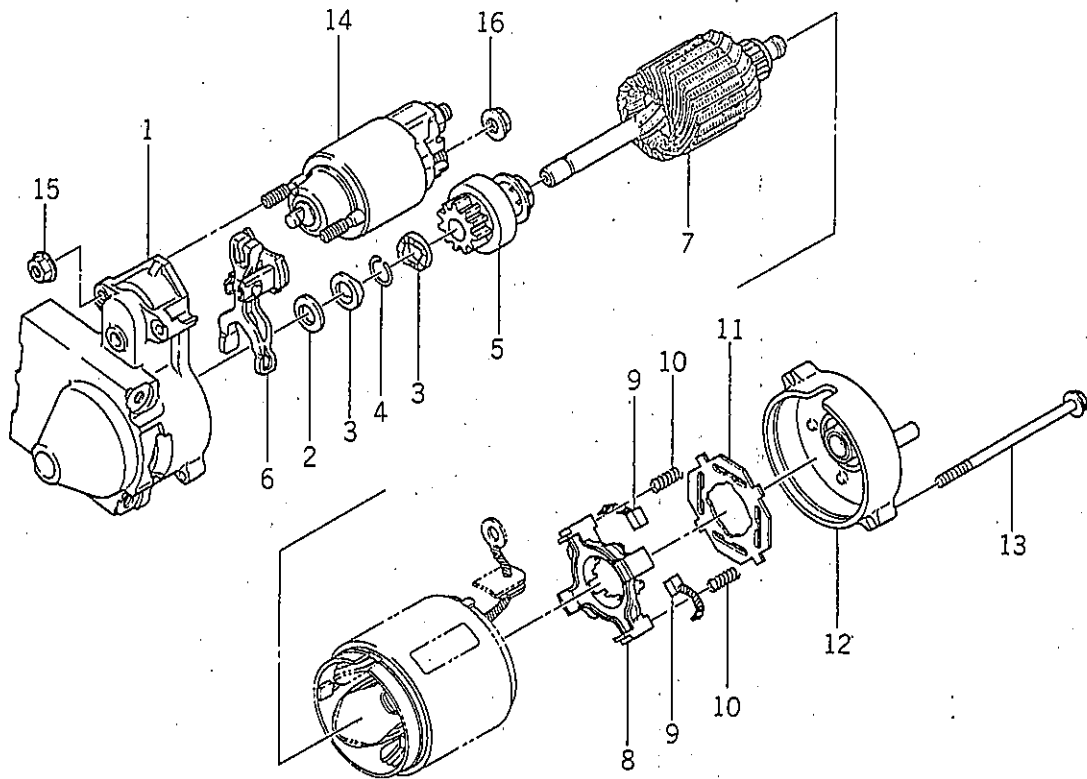
| Ref.No. | Part No. | Part Name | Quantity | | | Remarks |
|---------|------------|----------------|----------|---|---|---------|
| | | | A | B | C | |
| | 49040-2058 | FUEL PUMP ASSY | 1 | 1 | 1 | |
| P-1- 1 | 11009-2353 | •GASKET | 1 | 1 | 1 | |
| P-1- 2 | 43028-2052 | •DIAPHRAGM | 1 | 1 | 1 | |
| P-1- 3 | 49116-2051 | •VALVE ASSY | 2 | 2 | 2 | |
| P-1- 4 | 11009-2352 | •GASKET | 1 | 1 | 1 | |
| P-1- 5 | 43028-2051 | •DIAPHRAGM | 1 | 1 | 1 | |
| P-1- 6 | 11009-2351 | •GASKET | 1 | 1 | 1 | |
| P-1- 7 | 92009-2212 | •SCREW | 6 | 6 | 6 | |

Fig. S-1 ELECTRIC STARTER



| Ref.No. | Part No. | Part Name | Quantity | | | | Remarks |
|---------|----------------|-----------------------|----------|---|--|--|---------|
| | | | A | B | | | |
| | 21163-2065 | ELECTRIC STARTER ASSY | 1 | | | | |
| S-1- 1 | 317103-8331B | •PINION STOPPER SET | 1 | | | | |
| S-1- 2 | 317221-8312A | •CLUTCH ASSY | 1 | | | | |
| S-1- 3 | 16146-2063 | •COVER ASSY (F) | 1 | | | | |
| S-1- 4 | 317221-8348-00 | ••METAL, front cover | 1 | | | | |
| S-1- 5 | 92022-2187 | •WASHER KIT | 1 | | | | |
| S-1- 6 | 21080-2051 | •ARMATURE | 1 | | | | |
| S-1- 7 | 14079-2053 | •BRUSH HOLDER ASSY | 1 | | | | |
| S-1- 8 | 319203-8326-00 | ••BRUSH (-) | 1 | | | | |
| S-1- 9 | 21040-2051 | ••SPRING, brush | 3 | | | | |
| S-1-10 | 319203-8325-00 | •BRUSH (+) | 2 | | | | |
| S-1-11 | 16146-2064 | •COVER ASSY (R) | 1 | | | | |
| S-1-12 | 317299-8356-01 | ••METAL, rear cover | 1 | | | | |
| S-1-13 | 317224-8375A | •COVER, dust | 1 | | | | |
| S-1-14 | 92002-2241 | •BOLT | 2 | | | | |
| S-1-15 | 232B 0412 | •SCREW (4x12) | 2 | | | | |

Fig.S-2 ELECTRIC STARTER



| Ref.No. | Part No. | Part Name | Quantity | | | Remarks |
|---------|------------|-----------------------|----------|---|---|---------|
| | | | A | B | C | |
| | 21163-2070 | ELECTRIC STARTER ASSY | | 1 | 1 | |
| S-2- 1 | 16146-2076 | •COVER ASSY | | 1 | 1 | |
| S-2- 2 | 92022-2218 | •WASHER | | 1 | 1 | |
| S-2- 3 | 32085-2066 | •STOPPER | | 2 | 2 | |
| S-2- 4 | 92033-2081 | •RING, snap | | 1 | 1 | |
| S-2- 5 | 13081-2085 | •CLUTCH ASSY | | 1 | 1 | |
| S-2- 6 | 13168-2131 | •LEVER | | 1 | 1 | |
| S-2- 7 | 21080-2054 | •ARMATURE | | 1 | 1 | |
| S-2- 8 | 13091-2068 | •HOLDER, brush | | 1 | 1 | |
| S-2- 9 | 21039-2059 | •BRUSH | | 4 | 4 | |
| S-2-10 | 21040-2052 | •SPRING, brush | | 4 | 4 | |
| S-2-11 | 16073-2098 | •INSULATOR | | 1 | 1 | |
| S-2-12 | 16146-2077 | •COVER ASSY | | 1 | 1 | |
| S-2-13 | 92002-2277 | •BOLT | | 2 | 2 | |
| S-2-14 | 27010-2122 | •SWITCH ASSY | | 1 | 1 | |
| S-2-15 | 92015-2146 | •NUT | | 2 | 2 | |
| S-2-16 | 92015-2147 | •NUT | | 1 | 1 | |