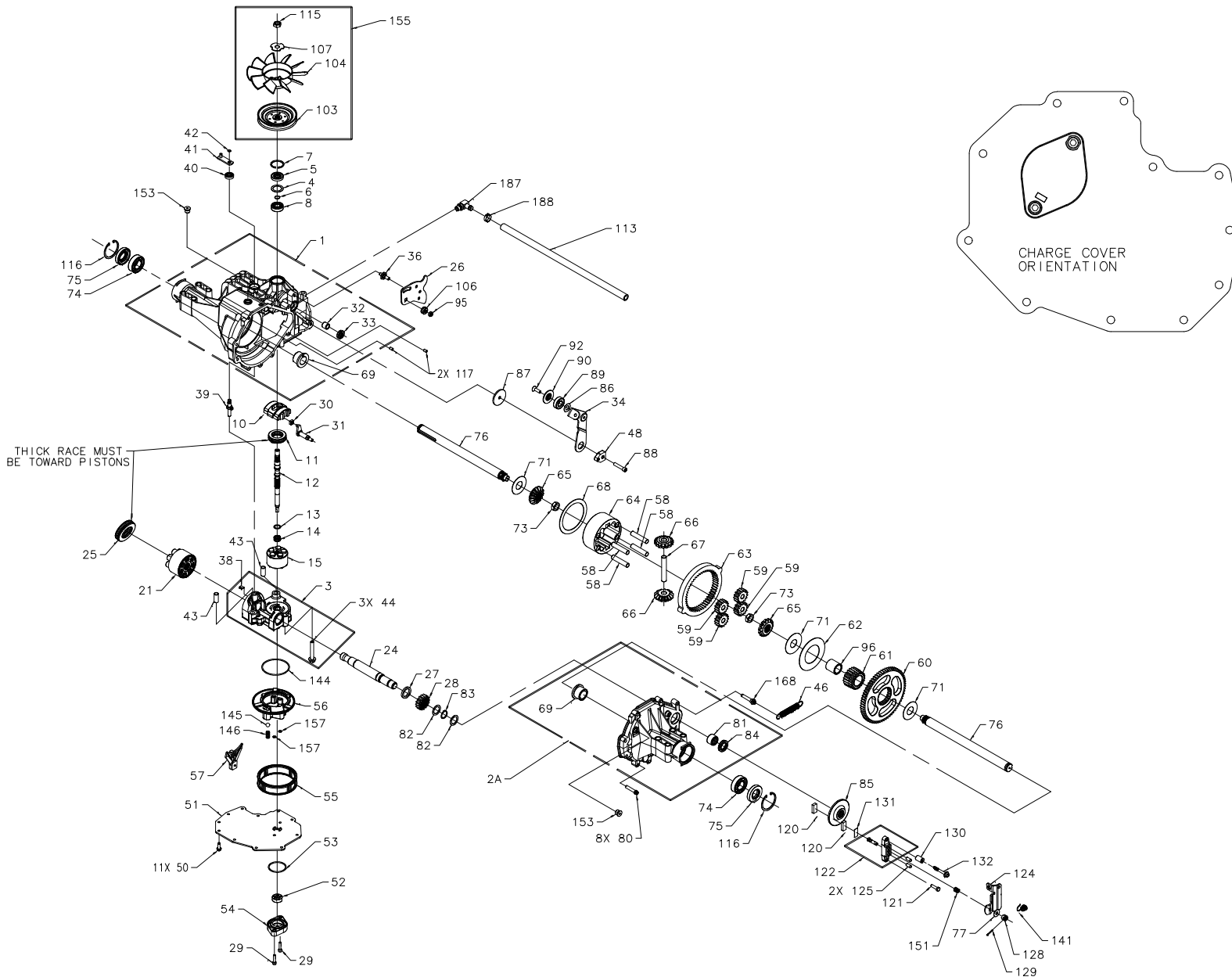
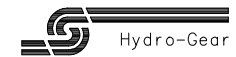


HG-342-3000 342-3000



ITEMS NOT SHOWN

- 79 - SEALANT
- 97 - 20W50 OIL (121.6oz)
- 203 - KIT, SEAL & O-RING



HG-342-3000 342-3000

ITEM #	PART #	QTY	DESCRIPTION	ITEM #	PART #	QTY	DESCRIPTION	ITEM #	PART #	QTY	DESCRIPTION
1	70433	1	ASSEMBLY, MAIN HOUSING	48	51097	1	PUCK, ADJUSTING	128	44142	1	NUT, CASTLE 5/16-24
		1	HOUSING, MAIN, CASE DRAIN	50	50752	11	SCREW, HEX FLANGE 1/4-20 X .75	129	44101	1	PIN, COTTER 3/32 X 3/4
		1	SEAL, LIP 12 X 25 X 7	51	50972	1	COVER, LOWER W/2 KIDNEYS	130	23711	1	SPACER, .26 X .57 X .87
		1	BEARING, FLANGE 1.0 X 1.376 X .99	52	50273	1	GEROTOR	131	44134	1	PLATE, PUCK
		1	BEARING, TRUNNION	53	9004100-1340	1	O-RING, 1.862 X 2.068	132	51146	1	BOLT, HEX HD 1/4-20 X 2 W/PATCH
		2	BEARING, CRADLE	54	50260	1	HOUSING, CHARGE PUMP	141	50884	1	SPRING, BRAKE ARM BIAS
2A	71120	1	ASSEMBLY, RIGHT HAND HOUSING	55	70538	1	KIT, FILTER	144	50974	1	O-RING, 2.987 X 3.09
		1	HOUSING, RIGHT HAND	56	51156	1	MANIFOLD, CHARGE	145	51157	1	SPRING, RELIEF
		1	BEARING, FLANGE 1.0 X 1.376 X .99	57	50796	1	RETAINER, MOTOR BEARING	146	9001214-4400	1	BALL, 7/16 IN
		1	BEARING, NEEDLE .875 X 1.125 X .75	58	50776	4	PIN, CARRIER	151	50919	1	SPRING, COMP. BRAKE ANTI-Drag
		1	SEAL, LIP .875 X 1.375 X .250	59	50763	4	GEAR, 15T PLANET	153	9005110-5600	2	PLUG, 9/16-18 (METAL)
3	71360	1	ASSEMBLY, CENTER SECTION	60	50646	1	GEAR, 67T SPUR	155	70489	1	KIT, FAN/PULLEY
		1	CENTER SECTION	61	50645	1	GEAR, 21T SUN			1	NUT, HEX 1/2-20 W/PATCH
		1	BEARING, JOURNAL .50 X .59 X .50	62	50769	1	WASHER, THRUST 2.32 X 4.10 X .05			1	WASHER, OD SLOTTED .53 X 1.63 X .06
		1	BEARING, .90 X 1.0 X .75	63	50764	1	GEAR, 51T RING			1	FAN, 7.0 IN (10 BLADE)
		1	PLATE, BYPASS	64	50765	1	CARRIER, PLANETARY			1	PULLEY, 4.5 IN
		2	CHECK PLUG ASSEMBLY, .027 SPRING	65	50647	2	GEAR, 14T MITER (SPLINED)	157	50977	2	O-RING, .239 X .379
4	2003018	3	SCREW, HEX FLANGE 3/8-24 X 2.5	66	50648	2	GEAR, 14T MITER (UNSPLINED)	168	51151	1	SCREW, TORX HD SHOULDERED 5/16-18 X 1.81
5	9008000-0128	1	SPACER, .98 X 1.37 X .04	67	50766	1	SHAFT, DIFFERENTIAL	187	50589	1	FITTING, 90° 9/16 SAE BEADED
6	2003016	1	SEAL, LIP 15 X 35 X 7	68	50767	1	WASHER, THRUST 3.46 X 4.39 X .05	188	50590	1	CLAMP, PINCH
7	2003052	1	RING, RETAINING	69	50768	2	BEARING, FLANGE 1.0 X 1.376 X .99	203	70492	1	KIT, SEAL & O-RING
8	2003043	1	RING, RETAINING	71	50788	3	WASHER, 1.0 X 2.25 X .04			1	SEAL, LIP 15 X 35 X 7
10	2003087	1	BEARING, BALL .59 X 1.38 X .43	73	50791	2	NUT, HEX 5/8-18 W/PATCH			1	SEAL, LIP 12 X 25 X 7
11	50551	1	SWASHPLATE, VARIABLE	74	50771	2	BEARING, BALL 25.4 X 52 X 15			1	SEAL, LIP 10 X 25 X 7
12	50795	1	BEARING, THRUST 30 X 52 X 13	75	50772	2	SEAL, LIP 1.0 X 2.049 X .375			1	O-RING 1.862 X 2.068
13	2003017	1	SHAFT, INPUT (STD CHARGE)	76	50663	2	SHAFT, AXLE 1.0 X 13.80 (KEY)			2	SEAL, LIP 1.0 X 2.049 X .375
14	2003014	1	WASHER, THRUST .59 X .79 X .04	77	44130	1	WASHER, .34 X .88 X .06			1	SEAL, LIP .875 X 1.375 X .250
15	70331	1	SPRING, BLOCK	79	50928	10, 1oz	SEALANT			2	O-RING, .239 X .379
		1	ASSEMBLY, BLOCK	80	50868	8	SCREW, TORX HD 5/16-18 X 1.5			1	KIT, O-RING, MANIFOLD
		1	BLOCK, CYLINDER	81	44752	1	BEARING, NEEDLE .875 X 1.125 X .75				
		5	PISTON	82	50777	2	WASHER, FLAT .88 X 1.25 X .04				
		5	SPRING, COMPRESSION	83	50775	1	RING, RETAINING				
		5	WASHER, THRUST	84	50773	1	SEAL, LIP .875 X 1.375 X .250				
21	70082	1	ASSEMBLY, BLOCK	85	50779	1	DISK, BRAKE				
		1	BLOCK, CYLINDER	86	50132	1	WASHER .51 X 1.0 X .03				
		7	PISTON	87	50836	1	SPACER, .32 X 1.96 X .15				
		7	SPRING, COMPRESSION	88	50837	1	SCREW, SOCKET HD CAP 5/16-24 X 1.5				
		7	WASHER, THRUST	89	44147	1	BEARING, BALL .62 X 1.38 X .44				
24	50662	1	SHAFT, MOTOR	90	51200	1	SPACER, LOCATING				
25	50552	1	BEARING, THRUST 42 X 68 X 16	92	50870	1	SCREW, COUNTERSUNK 5/16-18 X 1.0				
26	51692	1	ARM, CONTROL	95	50108	1	NUT, HEX LOCK 5/16-24 W/NYLON INSERT				
27	50774	1	SPACER, 1.03 X 1.38 X .184	96	50866	1	BUSHING, SLEEVE 1.0 X 1.31 X 1.34				
28	50661	1	GEAR, 16T PINION	97		121, 6oz	OIL, 20W50				
29	50975	2	SCREW, CAP M6 X 1 X 25	103	51875	1	PULLEY, 4.5 IN				
30	2000015	1	GUIDE, SLOT	104	51862	1	FAN, 7.0 IN (10 BLADE)				
31	50807	1	ARM, TRUNNION TAPERED SQUARE	106	51604	1	SPACER, TRUNNION				
32	2003009	1	BEARING, TRUNNION	107	51523	1	WASHER, OD SLOTTED .53 X 1.63 X .06				
33	9008000-0126	1	SEAL, LIP 12 X 25 X 7	113	50838	1	HOSE, 0.5 X 20				
34	51127	1	ARM, RETURN	115	44133	1	NUT, HEX 1/2-20 W/PATCH				
36	50426	1	STUD, SHORT 5/16-24	116	50859	2	RING, RETAINING				
38	70680	1	KIT, BYPASS PLATE	117	9004800-2506	2	PIN, STANDARD HEADLESS				
39	2003555	1	ACTUATOR, BYPASS	120	44132	2	PUCK, BRAKE				
40	45074	1	SEAL, LIP 10 X 25 X 7	121	44433	1	BOLT, HEX HD 1/4-20 X 1 W/PATCH				
41	50270	1	ARM, BYPASS	122	70633	1	ASSEMBLY, BRAKE YOKE				
42	44870	1	RING, RETAINING	124	50911	1	ARM, BRAKE				
43	50002	2	PIN, HOLLOW .39 X .50 X 1.12	125	44127	2	PIN, BRAKE ACTUATING				
44	50016	3	SCREW, HEX FLANGE 3/8-24 X 2.5								
46	51199	1	SPRING, 4 IN RETURN (MEDIUM)								